

DELHI TRANSCO LTD.

STATE LOAD DISPATCH CENTER

PROGRESS REPORT

MARCH 2017

S. No.	CONTENTS	Page No.
1.	Salient Features of Delhi Power System	3
2.	Performance of Generating Stations within Delhi	4
3.	Details of Outage of Generating Stations within Delhi	5-19
4.	Allocation of Power to Delhi from unallocated quota of central sector	20-21
5.	Allocation of Power to Discoms	23
6.	Power Availability Demand Position of Delhi at the time of occurrence of Peak Demand	24
7.	Power Availability Demand Position of Delhi at the time of occurrence of Maximum Un-Restricted Demand	25
8.	Source wise scheduled drawl from grid and Availability within Delhi	26-28
9.	Shedding Details	29-33
10.	Load Curve for the Day of Peak Demand	34
11.	Load Curve for the day of occurrence of Maximum Un-Restricted Demand	35
12.	Load Curve for the day of Maximum Energy Consumed	36
13.	Load Curve for the day of Maximum Un-Restricted Energy Demand	37
14.	Load Duration Curve	38
15.	Frequency Analysis	39
16.	Voltage Profile for significant 220kV Sub-Stations	40
17.	Voltage Profile for significant 400kV Sub-Stations	41-42
18.	Details of Capacitors Installations in Delhi	43-48
19.	Tripping Details of 400/220 KV System in Delhi Power System	49-51
20.	Details of Under frequency Relay operations in Delhi Power System	52

Sr. No.	Features	MAR. 2016	MAR 2017
1	Effective Generation Capacity within Delhi in MW		
	Rajghat Power House	135	135
	Gas Turbine	270	270
	Pragati Power Corporation Ltd.	330	330
	Badapur Thermal Power Station	705	705
	Rithala GT	108	108
	Bawana	1372	1372
	TOWMCL	16	16
	Total	2936	2936
2	Maximum Unrestricted Demand (MW)	3618	4141
	Date	31.03.16	31.03.17
	Time	19.21	19.22.48
3	Peak Demand met (MW)	3617	4139
	Date	31.03.16	31.03.17
	Time	19.21	19.22.48
4	Peak Availability (MW)	3522	4107
5	Shortage (-) / Surplus (+) in MW	(-) 95	(-) 32
6	Percentage Shortage (-) / Surplus (+)	(-) 2.63	(-) 0.77
7	Maximum Energy Consume in a day (Mus)	71.494	87.421
8	Energy Consumed during the month	1927.576	1967.949
9	Load Shedding in Mus		
A)	Due to Grid Restrictions		
i)	Under Frequency Relay Operations	0.000	0.001
ii)	Manual Load shedding from DTL S/Stns.	0.000	0.000
iii)	Load Shedding due to low frequency / Low Voltage / TTC/ATC Violation		
	NDPL	0.042	0.019
	BRPL	0.479	0.018
	BYPL	0.096	0.000
	NDMC	0.000	0.000
	MES	0.000	0.000
iv)	Due to transmission Constraints in Central Sector	0.000	0.000
	Total due to Grid Restriction	0.617	0.038
B)	Due to Constraints in System in Mus		
	DTL	0.520	0.327
	NDPL	0.092	0.133
	BRPL	1.545	0.305
	BYPL	0.255	0.090
	NDMC	0.000	0.000
	MES	0.000	0.000
	Other Agencies	0.000	0.087
	Total	2.412	0.942
11	Grand Total in Mus	3.029	0.980

2. PERFORMANCE OF GENERATING STATIONS WITHIN DELHI DURING MARCH 2017

A) For the month of March 2017

All Figures in MUs

S. No	Stations	Gross Generation	Aux. Consumption	Net Generation	Availability (%)	Backing Down
1.	RPH	0.000	0.276	-0.276	0.00	--
2.	GT	57.661	1.873	55.788	90.77	149.263
3.	PPCL	93.469	2.163	91.306	40.96	91.87
4.	BTPS	1.704	0.360	1.344	41.03	68.591
5.	Rithala	0.000	0.062	-0.062	89.17	61.008
6.	Bawana	213.128	8.307	204.821	78.28	593.492
7.	Towmcl	13.705	1.924	11.781	--	--
8.	EDWPCL	2.435	1.167	1.268	--	--
9.	DMSWL	9.975	1.729	8.246	--	--
	TOTAL	392.077	17.861	374.216	--	964.224

B) For the Year 2016-17 (Upto March 2017)

Power Station	Effective Capacity (MW)	Net Generation in MUs for Mar 2017	Availability (%) for Mar 2017	PLF (%) for Mar 2017	Cumulative Generation in MUs upto Mar 2017 for the year 2016-17	Cumulative Availability in % upto Mar 2017 for the year 2016-17	Cumulative PLF in % upto Mar 2017 for the year 2016-17
RPH	135	-0.276	0.00	-1.05		56.16	2.73
GT	270	55.788	90.77	14.17		74.81	19.19
PPCL	330	91.306	40.96	2.38		90.33	53.08
BTPS	705	1.344	41.03	26.33		78.24	37.15
Rithala	108	-0.062	89.17	0.00		87.74	0.00
Bawana	1372	204.821	78.28	13.03	1834.314	64.55	15.81
Towmcl	16	11.781	--	--		--	--
EDWPCL	--	1.268	--	--		--	--
DMSWL	--	8.246	--	--		--	--
TOTAL	2936	374.216	--	--		--	--

3 DETAILS OF OUTAGES OF GENERATING STNS. WITHIN DELHI W.E.F. APRIL 2016

RPH

Unit No	Capacity in MW	Outage		Synchronization		Reason of Outage
		Date	Time	Date	Time	
1	67.5	08.05.15	13:40	--	--	Tripped on boiler tube leakage

Unit No	Capacity in MW	Outage		Synchronization		Reason of Outage
		Date	Time	Date	Time	
2	67.5	21.05.15	10:20	--	--	Stopped due to shortage of coal

(B) Gas Turbine

Unit No	Capacity in MW	Outage		Synchronization		Reason of Outage
		Date	Time	Date	Time	
1	30	30.03.16	13:52	17.04.16	10:45	Machine tripped as heavy jerk observed in Control room and 160 MVA Tr-i& II tripped at 220 KV end due to tripping of Geeta Colony to Wazirabad ckt. Machine not taken on load due to less demand from SLDC.
		17.04.16	10:45	17.04.16	18:45	Station shut down to attend ACW line.
		17.04.16	18:45	29.04.16	19:15	Stopped due to low demand and high frequency
		13.5.16	16:10	13.5.16	17:47	Machine stopped to replace the broken drain valve in the inlet line of ACW.
		15.5.16	08:40	15.5.16	11:00	machine stopped to attend the leakage of oil from LV bushing of Unit Transformer. Machine cleared by Electrical division at 11:00 hrs but machine not taken on load due to low schedule from SLDC.
		15.5.16	11:00	16.5.16	10:54	Machine stopped as per SLDC message
		23.5.16	15:46	25.5.16	15:30	Machine tripped due to tripping of 160 MVA Tr-I& II. After that machine not taken on load due to less demand
		28.5.16	12:01	6.6.16	09:58	Stopped due to low demand and high frequency
		10.6.16	16:54	10.6.16	17:08	machine came on FSNL as both the ICT 160 MVA TX-I & II tripped due to jek in the system.
		13.6.16	07:11	13.6.16	09:00	Machine tripped as heavy jerk observed in the system as both 160 MVA Tx-I & II tripped.
		4.7.16	17:53	6.7.16	08:50	Stopped due to low demand and high frequency
		15.7.16	00:32	15.7.16	18:18	
		15.7.16	21:42	20.7.16	10:58	
		20.7.16	15:25	21.7.16	14:45	
		1.8.16	14:55	1.8.16	15:40	Machine stopped due to heavy smoke from Turbine auxiliary compartment.
		1.8.16	18:43	2.8.16	10:00	Tripped due to failure of communication link with I/O packs.
		2.8.16	10:00	3.8.16	10:15	Stopped due to low demand and high frequency
		4.8.16	12:30	4.8.16	14:08	Machine stopped to replace 11 KV CKT breaker due to low SF6 gas pressure.
		5.8.16	19:05	29.8.16	19:35	Stopped due to low demand and high frequency
		29.8.16	20:50	02.09.16	12:56	
04.10.16	00:25	04.10.16	16:05	Machine tripped as all communication failed . PCAA card failed.		
18.10.16	03:21	18.10.16	06:21	Machine came on FSNL and following alarm appeared. Generator Control panel under voltage. Generator breaker tripped.		
18.10.16	13:45	03.11.16	14:52	Stopped due to low demand and high frequency		

Unit No	Capacity in MW	Outage		Synchronization		Reason of Outage
		Date	Time	Date	Time	
1	30 (Contd.)	26.11.16	15:47	26.11.16	16:36	Machine came on part load due to tripping of both 160 MVA Tr- 1 & 2 after five minutes machine tripped.
		29.11.16	10:50	29.11.16	10:57	Machine came on FSNL as both 160 MVA Tr. Tripped
		29.11.16	13:09	29.11.16	13:17	
		30.11.16	04:30	30.11.16	04:56	
		30.11.16	04:59	30.11.16	05:39	Machine tripped due to grid disturbance.
		30.11.16	06:00	30.11.16	06:25	
		1.12.16	13:25	17.12.16	16:15	Stopped due to low demand and high frequency
		31.12.16	05:25	31.12.16	16:12	Machine tripped due to high TAD
		8.1.17	12:01	8.1.17	17:38	Machine stopped to Replace the Out let of ACW cooling line in GT#3.
		20.1.17	20:01	26.1.17	15:08	Machine stopped due to low schedule from SLDC on CC spot R-LNG.
		03.03.17	06:48	03.03.17	07:40	Due to flash in 11 KV breaker of 2 MVA Transformer , LT supply to machine failed and machine came on FSNL.
		11.03.17	00:30	23.03.17	11.39	Stopped due to low demand and high frequency

Unit No	Capacity in MW	Outage		Synchronization		Reason of Outage
		Date	Time	Date	Time	
2	30	28.01.16	01:20	31.03.16	23:59	Stopped due to low demand and high frequency
		01.04.16	18:00	17.04.16	10:45	
		17.04.16	10:45	17.04.16	18:45	Station shut down to attend ACW line.
		17.04.16	18:45	5.5.16	15:11	Stopped due to low demand and high frequency
		5.5.16	15:57	5.5.16	16:40	Machine stopped due to problem in ACW line.
		7.5.16	17:02	7.5.16	17:52	Problem in battery charger
		19.5.16	00:02	19.5.16	01:03	T-Communication link inoperative
		23.5.16	15:46	23.5.16	15:50	Machine came on FSNL due to tripping of 160 MVA Tr-I& II.
		25.5.16	06:09	25.5.16	06:52	T-Communication link inoperative
		26.5.16	18:15	26.5.16	23:20	Machine tripped on high exhaust trip alarm.
		29.5.16	00:50	06.06.16	08.56	Stopped due to low demand and high frequency
		10.6.16	16:54	10.6.16	17:00	machine came on FSNL as both the ICT 160 MVA TX-I & II tripped due to jek in the system.
		13.6.16	07:11	13.6.16	13:40	Machine tripped as heavy jerk observed in the system as both 160 MVA Tx-I & II tripped.
		1.7.16	02:20	1.7.16	09:18	Loss of Field alarm appeared and machine tripped on Electrical Trouble Normal Shutdown.
		2.7.16	11:40	6.7.16	15:45	Stopped due to low demand and high frequency
		6.7.16	22:50	6.7.16	23:10	Loss of Field alarm appeared and machine tripped on Electrical Trouble Normal Shutdown.
		6.7.16	23:10	7.7.16	16:26	Stopped due to low demand and high frequency
		7.7.16	18:40	7.7.16	20:09	Loss of Field alarm appeared and machine tripped on Electrical Trouble Normal Shutdown.
		9.7.16	15:35	9.7.16	16:40	machine desynchroniz to check the Mvar problem.
		9.7.16	18:40	9.7.16	22:45	Loss of Field alarm appeared and machine tripped on Electrical Trouble Normal Shutdown.
		9.7.16	22:53	12.7.16	15:55	Stopped due to low demand and high frequency
		15.7.16	21:42	20.7.16	13:20	
		21.7.16	15:40	22.7.16	13:02	Machine tripped on Electrical trouble normal shut down.
		5.8.16	10:23	5.8.16	17:00	
		5.8.16	17:00	12.8.16	12:58	Stopped due to low demand and high frequency
		12.8.16	13:28	29.8.16	14:45	
		18.10.16	17:45	03.11.16	11.30	

Unit No	Capacity in MW	Outage		Synchronization		Reason of Outage
		Date	Time	Date	Time	
2	30 (Contd)	4.11.16	03:01	4.11.16	05:05	Generator breaker trip alarm appeared on CRT of GT-2. M/c came on FSNL & also showing 8 MW load on CRT.After discussion with C&I, m/c manually tripped by tripping 66 KV breaker.
		26.11.16	15:47	26.11.16	16:28	Machine tripped as both 160 MVA Tr-1 & 2 tripped.
		29.11.16	10:50	29.11.16	10:58	Machine came on FSNL as both 160 MVA Tr. Tripped
		29.11.16	13:09	29.11.16	13:13	Machine came on FSNL as both 160 MVA Tr. Tripped
		30.11.16	04:38	30.11.16	05:12	Machine stopped as per instruction of SLDC.
		30.11.16	06:00	30.11.16	06:56	Machine tripped due to grid disturbance.
		30.11.16	11:44	12.12.16	15:15	Machine stopped due to high TAD and damage to filter house.
		12.12.16	15:15	17.12.16	12:23	Stopped due to low demand and high frequency
		29.12.16	05:52	29.12.16	07:47	Machine tripped on Electrical Trouble Normal shut down with Generater loss of field.
		31.12.16	08:35	31.12.16	08:46	Machine came on FSNL due to tripping of both 160 MVA Inter Connecting Transformer. As per SLDC Grid disturbance occurred due tripping of 220 KV IP to Patpargunj Ckt.
		2.1.17	00:35	2.1.17	09:22	Machine stopped by SLDC due to heavy under drawl by beneficiary.
		8.1.17	12:01	8.1.17	17:32	Machine stopped to Replace the Out let of ACW cooling line in GT#3.
		12.1.17	22:40	12.1.17	23:35	Stopped due to low demand and high frequency
		16.1.17	12:40	27.1.17	08:09	
		11.3.17	18:32	23.3.17	15:50	

Unit No	Capacity in MW	Outage		Synchronization		Reason of Outage
		Date	Time	Date	Time	
3	30	01.02.16	19:15	17.04.16	10:45	Stopped due to low demand and high frequency
		17.04.16	10:45	17.04.16	18:45	Station shut down to attend ACW line.
		17.04.16	18:45	12.05.16	12:00	Stopped due to low demand and high frequency
		12.5.16	12:00	19.5.16	23:09	Machine under shut down as permit taken by Electrical division to replace its 66 KV breaker.
		19.5.16	23:09	20.5.16	20:52	Machine available but not taken on load due to less schedule from SLDC
		20.5.16	23:58	06.06.16	15:40	Stopped due to low demand and high frequency
		6.6.16	18:06	9.6.16	15:50	
		9.6.16	18:46	30.6.16	14:30	
		30.6.16	14:40	30.6.16	16:20	Machine tripped due'S' communication link inoperative.
		30.6.16	17:19	30.6.16	18:05	machine tripped on false alarm in Turbine or Accessories Area.
		01.07.16	01:00	8.1.17	12:00	Stopped due to low demand and high frequency
		8.1.17	12:00	8.1.17	18:00	Machine not available due to Replacement of the Out let valve of ACW cooling line in GT#3.
		8.1.17	18:00	13.1.17	12:58	Stopped due to low demand and high frequency
		13.1.17	13:21	14.1.17	10:40	
		14.1.17	21:40	16.1.17	11:57	
		16.1.17	16:58	18.1.17	13:55	
		18.1.17	17:00	19.1.17	11:03	
		19.1.17	14:15	20.1.17	10:22	
		26.1.17	13:15	26.1.17	16:00	Machinetripped on high TAD
		26.1.17	16:00	28.03.17	14.10	Stopped due to low demand and high frequency

Unit No	Capacity in MW	Outage		Synchronization		Reason of Outage
		Date	Time	Date	Time	
4	30	29.01.16	14:00	17.04.16	10:45	Stopped due to low demand and high frequency
		17.04.16	10:45	17.04.16	18:45	Station shut down to attend ACW line.
		17.04.16	18:45	16.05.16	15:04	Stopped due to low demand and high frequency
		16.5.16	18:04	18.5.16	16:12	Machine stopped due to low schedule from SLDC
		21.5.16	16:05	21.5.16	17:57	supply of Computer failed.
		23.5.16	15:46	24.5.16	15:25	Machine tripped due to tripping of 160 MVA Tr-I& II. After that machine nottaken on load due to less demand
		24.5.16	16:27	6.6.16	11.12	Stopped due to low demand and high frequency
		6.6.16	20:10	7.6.16	10:34	
		10.6.16	16:54	10.6.16	17:08	machine came on FSNL as both the ICT 160 MVA TX-I & II tripped due to jek in the system.
		10.6.16	18:32	13.6.16	12:55	Stopped due to low demand and high frequency
		13.6.16	22:38	20.6.16	08:33	
		20.6.16	16:30	24.6.16	12:14	
		24.6.16	17:45	31.12.16	10:07	
		30.6.16	19:00	30.6.16	19:55	Machine tripped on over temperature alarm
		2.7.16	08:48	8.7.16	10:51	Stopped due to low demand and high frequency
		8.7.16	12:20	14.7.16	11:45	
		14.7.16	15:10	08.01.17	12:00	
		8.1.17	12:00	8.1.17	18:00	Machine not available due to Replacement of the Out let valve of ACW cooling line in GT#3.
		8.1.17	18:00	21.1.17	18:07	Stopped due to low demand and high frequency
		21.1.17	18:13	23.1.17	11:51	
23.1.17	12:33	28.3.17	14.10			

Unit No	Capacity in MW	Outage		Synchronization		Reason of Outage
		Date	Time	Date	Time	
5	30	14.03.16	19:15	01.04.16	15:05	Stopped due to low demand and high frequency
		11.04.16	19:06	11.04.16	21:22	
		17.04.16	10:45	17.04.16	18:38	Station shut down to attend ACW line.
		18.04.16	12:54	24.04.16	10:55	Stopped due to low demand and high frequency
		29.04.16	19:15	13.05.16	17:10	
		13.5.16	19:30	16.5.16	13:29	machine stopped to attend leakage of oil from IGV
		20.5.16	23:42	21.5.16	18:08	
		21.5.16	18:55	21.5.16	20:04	Machine tripped on high exhaust temperature
		22.5.16	11:46	23.5.16	11:30	Stopped due to low demand and high frequency
		23.5.16	11:55	23.5.16	12:30	machine desynchronise to check the position of Bleed valve.
		23.5.16	15:46	24.5.16	15:42	Machine tripped due to tripping of 160 MVA Tr-I& II. After that machine nottaken on load due to less demand
		25.5.16	16:35	26.5.16	19:05	Stopped due to low demand and high frequency
		27.5.16	00:07	27.5.16	17:20	
		27.5.16	17:25	28.5.16	11:07	
		29.5.16	22:10	29.5.16	22:22	Machine came on FSNL due to tripping of 160 MVA Tr-I& II.
		10.6.16	16:54	10.6.16	17:08	machine came on FSNL as both the ICT 160 MVA TX-I & II tripped due to jek in the system.
		11.6.16	20:45	13.6.16	11:12	Stopped due to low demand and high frequency
		20.6.16	01:04	23.6.16	15:59	Machine stopped to inspect the low load reason on mahine by M/s BGGTS
		23.6.16	16:00	24.6.16	16:18	Stopped due to low demand and high frequency
		24.6.16	18:05	25.6.16	10:10	
		2.7.16	11:35	4.7.16	16:52	
		7.7.16	17:20	8.7.16	08:38	
		12.7.16	16:55	14.7.16	09:06	
		15.7.16	18:57	15.7.16	21:40	
		23.7.16	08:15	27.7.16	05:03	
		28.7.16	15:17	5.8.16	17:10	
		15.8.16	16:31	15.8.16	17:37	Heavy jerk observed in Control room. GT-5 tripped .Relay-P343 operated at protection panel.Both 160 MVA tr. Tripped.
		18.8.16	17:05	19.8.16	11:06	Stopped due to low demand and high frequency
		19.8.16	11:17	19.8.16	11:40	Machine desynchronize to check the hunting in load.
		31.8.16	10:30	04.10.16	08:34	Stopped due to low demand and high frequency
		04.10.16	19:00	18.10.16	16:32	
		3.11.16	16:03	10.11.16	12:45	
		11.11.16	00:04	30.11.16	13:18	
		7.12.16	08:35	7.12.16	17:26	Machine stopped due to TAD high.
		17.12.16	15:35	08.01.17	12:00	Stopped due to low demand and high frequency
		8.1.17	12:00	8.1.17	18:00	Machine not available due to Replacement of the Out let valve of ACW cooling line in GT#3.
		8.1.17	18:00	10.3.17	16:06	Machine stopped due to low schedule from SLDC on CC spot R-LNG.
		13.3.17	18:31	21.3.17	07:00	
		23.3.17	16:30	25.3.17	18:15	
		25.3.17	18:15	31.3.17	23:59	machine taken to Hot Gas Path Inspection & Generator O/h.

Unit No	Capacity in MW	Outage		Synchronization		Reason of Outage
		Date	Time	Date	Time	
6	30	19.03.16	11:40	6.04.16	12:00	Stopped due to low demand and high frequency
		06.04.16	12:00	11.04.16	18:10	machine taken under S/d for Combustion Inspection & Boroscopic Inspection
		11.04.16	21:06	17.04.16	10:45	Stopped due to low demand and high frequency
		17.04.16	10:45	17.04.16	18:45	Station shut down to attend ACW line.
		17.04.16	18:45	18.04.16	11:30	Stopped due to low demand and high frequency
		24.04.16	11:44	13.05.16	18:45	
		13.5.16	20:15	16.5.16	17:23	
		23.5.16	15:46	23.5.16	16:37	Machine tripped due to tripping of 160 MVA Tr-I& II.
		29.5.16	01:50	02.06.16	10:48	Machine stopped due to low schedule from SLDC
		10.6.16	16:54	10.6.16	17:08	machine came on FSNL as both the ICT 160 MVA TX-I & II tripped due to jek in the system.
		11.6.16	20:45	13.6.16	20:34	Stopped due to low demand and high frequency
		20.6.16	16:35	24.6.16	13:20	
		24.6.16	18:08	25.6.16	10:04	
		6.7.16	16:55	8.7.16	11:05	
		12.7.16	15:00	14.7.16	15:05	Machine tripped on Electrical trouble normal shut down. SF-6 second stage gas pressure low alarm appeared on protection pannel
		27.7.16	03:58	27.7.16	09:11	
		27.7.16	09:11	05.08.16	12:10	Stopped due to low demand and high frequency
		29.8.16	17:25	05.10.16	16:25	Machine stopped as there was no schedule from SLDC on Spot R-LNG.
		05.10.16	16:25	05.10.16	17:20	Trial run of GT-6 to check the sound & vibn. While shutting down
		05.10.16	17:20	18.10.16	11:25	Stopped due to low demand and high frequency
		3.11.16	13:57	10.11.16	12:12	
		10.11.16	17:01	10.11.16	19:00	Machine tripped on over temperature trip.
		10.11.16	19:00	01.12.16	12:30	Machine made available by Maintenance division but not taken on load due low schedule from beneficiary.
		17.12.16	19:40	8.1.17	12:00	Stopped due to low demand and high frequency
		8.1.17	12:00	8.1.17	18:00	Machine not available due to Replacement of the Out let valve of ACW cooling line in GT#3.
		8.1.17	18:00	11.03.17	17:38	Machine stopped due to low schedule from SLDC on CC spot R-LNG.
23.03.17	14:17	31.03.17	23:59			

Unit No	Capacity in MW	Outage		Synchronization		Reason of Outage
		Date	Time	Date	Time	
STG-1	30	29.1.16	14:00	01.04.16	18:05	M/c cleared from maintenance side but Stopped due to low demand and high frequency
		17.04.16	10:45	17.04.16	18:45	Station shut down to attend ACW line.
		17.04.16	18:45	29.04.16	19:15	Stopped due to low demand and high frequency
		01.5.16	21:27	01.5.16	22:59	Machine tripped due to failure of LT supply.
		13.5.16	16:10	13.5.16	18:48	Machine stopped due to problem in ACW line.
		23.5.16	15:46	23.5.16	17:25	Machine tripped due to tripping of 160 MVA Tr-I & II.
		23.5.16	19:20	24.5.16	14:04	Stopped due to low demand and high frequency
		29.5.16	00:50	06.06.16	11.44	
		10.6.16	16:54	10.6.16	17:53	machine tripped as both the ICT 160 MVA TX-I & II tripped due to jerk in the system.
		13.6.16	07:11	13.06.16	10:45	Machine tripped as heavy jerk observed in the system as both 160 MVA Tx-I & II tripped.
		04.07.16	17:53	06.07.16	12:20	Stopped due to low demand and high frequency
		15.07.16	21:42	21.07.16	13:29	
		31.07.16	15:31	31.07.16	16:05	Due to jerk CEP-1A tripped & machine tripped on low vacuum.
		05.08.16	19:05	29.08.16	17:20	Machine stopped as per sSLDC to maintain only 72 MW generation.
		14.09.16	11:35	14.09.16	12:53	Machine tripped due to turbine F JB shaft vibration very high.
		15.09.16	14:28	15.09.16	16:02	Machine tripped on generator RJB housing vibration very high.
		06.10.16	17:02	06.10.16	18:46	Machine stopped to attend hot spot on Y-phase bushing of STG#1 unit Transformer.
		07.10.16	11:52	07.10.16	12:34	Due to Jerk , equipments like BFP, CEP & ACW tripped. Equipments restarted again jerk observed and the equipments BFP, CEP and ACW tripped and machine tripped on low vacuum.
		18.10.16	17:45	03.11.16	13:38	Stopped due to low demand and high frequency
		25.11.16	13:26	25.11.16	15:28	Due to Sudden jerk 7.5 MVA tr. Tripped on earth fault relay leading to failure of auxiliary supply to critical auxiliaries like BFP, CEP and machine tripped. .
		26.11.16	15:47	26.11.16	18:20	Machine tripped as both 160 MVA Tr-1 & 2 tripped.
		29.11.16	10:50	29.11.16	12:02	
		29.11.16	13:09	29.11.16	13:55	
		30.11.16	04:30	30.11.16	09:50	
		1.12.16	13:25	17.12.16	15:30	Stopped due to low demand and high frequency
		31.12.16	08:35	31.12.16	11:43	Machine tripped as Auxiliary supply failed due to tripping of both 160 MVA Inter Connecting Transformer. As per SLDC Grid disturbance occurred due tripping of 220 KV IP to Patpargunj Ckt.
		8.1.17	12:01	8.1.17	19:02	Machine stopped to Replace the Out let of ACW cooling line in GT#3.
		20.1.17	20:01	26.1.17	18:05	Stopped due to low demand and high frequency
		13.2.17	12:29	13.2.17	14:10	Machine tripped due to low vacuum. Running BFP-1B tripped and stand by BFP was under PTW. Efforts were made to save the tripping but due to low drum pressure subsequently reduction in PRDS pr machine tripped on low vacuum.
		3.3.17	06:48	3.3.17	09:25	Due to flash in 11 KV breaker of 2 MVA Transformer , LT supply to machine failed and machine tripped.
		3.3.17	09:48	3.3.17	10:33	Machine tripped due to maloperation of breaker.
		4.3.17	11:30	4.3.17	13:35	machine stopped to attend oil leakage from Servo motor.
6.3.17	13:01	6.3.17	13:44	There was problem in locking mechanism of 11 KV breaker of 2 MVA Transformer due to which flash occurred and this leads to voltage dip at 6.6 KV bus causing tripping of STG Auxiliaries like BFP, CEP & ACW.		
11.3.17	18:32	23.3.17	14:08	Machine stopped due to low schedule from SLDC on CCNG mode.		

Unit No	Capacity in MW	Outage		Synchronization		Reason of Outage
		Date	Time	Date	Time	
STG -2	30	29.01.16	14:00	17.04.16	10:45	M/c cleared from maintainence side Stopped due to low demand and high frequency
		17.04.16	10:45	17.04.16	18:45	Station shut down to attend ACW line.
		17.04.16	18:45	19.05.16	07:45	Stopped due to low demand and high frequency
		21.5.16	16:04	21.5.16	19:15	Machine tripped due to tripping of GT#4
		23.5.16	15:46	23.5.16	17:25	Machine tripped due to tripping of 160 MVA Tr-I& II.
		23.5.16	17:25	06.06.16	17:04	Stopped due to low demand and high frequency
		6.6.16	17:19	6.6.16	19:38	machine tripped on Hot well very high alarm as the parameter of STG# 2 got freezed and actual value of the same was not appearing on BCD.
		6.6.16	20:10	7.6.16	12:55	Stopped due to low demand and high frequency
		10.6.16	16:54	13.6.16	18:06	machine tripped as both the ICT 160 MVA TX-I & II tripped due to jek in the system. Machine not taken on load due low demand.
		13.6.16	22:38	20.6.16	11:40	Stopped due to low demand and high frequency
		20.6.16	16:35	24.6.16	14:54	
		24.6.16	17:47	30.6.16	13:45	
		30.6.16	19:00	30.6.16	22:03	Machine tripped due to tripping of GT#4
		02.07.16	08:48	19.10.16	14.00	Stopped due to low demand and high frequency
		19.10.16	14.00	20.10.16	23.59	Fire broke down in some control and power cables near CEP- 2A after that machine taken for major overhauling which was already planned from 20/10/2016 to 14/11/2016.
		21.10.16	00.00	14.01.17	21.08	Planned outage from 21.10.2016 to 20.11.2016
		14.1.17	21:15	20.1.17	13:04	Machine was under testing after O/h
		23.1.17	13:30	23.1.17	18:20	Machine stopped to attend Control Valve Pin which was dislocated from its position.
		26.1.17	13:15	26.1.17	16:00	Machine tripped due to tripping of GT#3 as it was running on single HRSG#3.
		26.1.17	16:00	28.3.17	18.45	machine available but not taken on load due to low schedule from SLDC on CC Spot.
30.3.17	20.34	31.3.17	01.17	Machine tripped on high speed.		
31.3.17	12.28	31.3.17	14.32	Machine tripped and Turbine Ch-I & II operated. On local it was found that trip oil sensing line got detached.		

Unit No	Capacity in MW	Outage		Synchronization		Reason of Outage
		Date	Time	Date	Time	
STG-3	30	19.03.16	18:15	01.04.16	17:45	Stopped due to low demand and high frequency
		01.04.16	18:30	01.04.16	19:26	Tripped on Gen. Class-A relay
		01.04.16	19:32	01.04.16	20:07	Tripped on Gen. Class-A relay
		11.04.16	21:06	11.04.16	21:45	Machine stopped due to stopping of GT#6.
		17.04.16	10:45	17.04.16	19:57	Station shut down to attend ACW line.
		29.04.16	19:15	09.05.16	15:52	Stopped due to low demand and high frequency
		16.5.16	16:02	16.5.16	16:30	Machine stopped to attend false over speed alarm
		21.5.16	21:28	21.5.16	23:52	Machine tripped on Turbine FJB shaft vibration very high
		23.5.16	15:46	23.5.16	17:30	Machine tripped due to tripping of 160 MVA Tr-I& II.
		29.5.16	22:10	29.5.16	23:45	Machine tripped due to tripping of 160 MVA Tr-I& II.
		31.5.16	20:16	31.5.16	23:45	SNH feeder tripped & found earth fault.
		2.6.16	11:36	2.6.16	14:00	Machine tripped while changing the load from auxiliary to pressure.
		10.6.16	16:54	10.6.16	17:38	machine tripped due to jek in the system.
		11.6.16	20:45	13.6.16	13:26	Stopped due to low demand and high frequency
		13.6.16	21:30	13.6.16	22:30	Machine tripped on Class A relay.
		19.6.16	07:01	19.6.16	08:02	Machine tripped on FJB shaft vibration very high.
		20.6.16	16:35	24.6.16	15:16	Stopped due to low demand and high frequency
		24.6.16	18:12	25.6.16	11:55	
		7.7.16	17:20	8.7.16	11:18	
		12.7.16	16:55	14.7.16	12:30	
		18.7.16	04:38	18.7.16	06:45	Machine tripped on FJB shaft Vibration very high.
		27.7.16	03:58	27.7.16	09:11	Machine tripped due to tripping of GT-6 as running on single HRSG#6.
		28.7.16	15:17	05.08.16	16:30	Stopped due to low demand and high frequency
		5.08.16	18:01	05.08.16	18:52	Machine tripped on turbine oil pressure very low.
		9.08.16	10:55	09.08.16	11:31	Machine tripped on low vacuum due to tripping of CWP-1
		15.08.16	16:31	15.08.16	17:28	Heavy jerk observed. STG-3 tripped due to failure of auxiliary supply.
		28.08.16	14:28	28.08.16	16:16	Machine tripped on generator housing vibration high.after replacing the Vibratio card machine synchronized.
		28.08.16	16:27	28.08.16	17:03	Machine tripped on generator and turbine housing vibration high.
		31.08.16	10:30	04.10.16	13:14	Machine stopped as per sSLDC to maintain only 36 MW generation.
		04.10.16	19:00	18.10.16	13:25	Stopped due to low demand and high frequency
		3.11.16	16:03	10.11.16	14:15	
		11.11.16	00:04	30.11.16	16:56	
		17.12.16	19:40	08.01.17	12:00	
		8.1.17	12:00	8.1.17	18:00	Machine not available due to Replacement of the Out let valve of ACW cooling line in GT#3.
		8.1.17	18:00	10.03.17	20:42	Stopped due to low demand and high frequency
		23.3.17	16:30	28.3.17	18:45	
		28.3.17	18:45	31.3.17	23:59	Machine taken for Chemical Cleaning of Condensor

(C) PRAGATI

Unit No	Capacity in MW	Outage		Synchronization		Reason of Outage
		Date	Time	Date	Time	
1	104	01.04.16	00.00	06.04.16	06.00	Stopped due to low demand and high frequency
		01.05.16	05.58	01.05.16	13.15	Unit stopped by stn.
		07.05.16	11.37	07.05.16	12.34	Unit tripped.
		23.05.16	22.16	24.05.16	10.01	Unit stopped and started due to low demand and high frequency
		09.06.16	14:33	09.06.16	15:10	GT#1 tripped on grid disturbance.
		18.06.16	07:09	18.06.16	09:13	GT#1 tripped on grid disturbance.
		18.06.16	10:09	18.06.16	10:38	GT#1 tripped.
		11.07.16	08.10	11.07.16	09.32	Unit tripped due to grid disturbance
		16.07.16	08.50	19.07.16	11.00	Stopped due to low demand and high frequency
		19.07.16	11.00	19.07.16	14.01	Unit not available
		30.07.16	00.00	31.07.16	14.10	Stopped due to low demand and high frequency
		06.08.16	14.00	08.08.16	10.37	
		12.08.16	17.00	16.08.16	10.50	
		18.08.16	11.30	22.08.16	10.35	
		31.08.16	09.46	03.09.16	09.58	
		19.09.16	00.00	04.10.16	21.42	Unit stopped for CI.
		05.10.16	01.11	05.10.16	02.46	Stopped after trial run (VT supply failure)
		05.10.16	07.27	16.10.16	18.36	Generator cooler / winder problem attended during CI
		16.10.16	22.35	31.10.16	23.59	Stopped due to low demand and high frequency
		01.11.16	00.00	07.11.16	13.05	Stopped due to low demand and high frequency
		26.11.16	09.48	26.11.16	13.30	Stopped due to abnormal sound
		26.11.16	15.43	26.11.16	16.36	Unit tripped on grid disturbance
		28.11.16	19.29	28.11.16	22.30	Stopped due to fire at filter house
		28.11.16	22.30	29.11.16	01.00	Stopped due to low demand and high frequency
		29.11.16	01.00	29.11.16	20.12	R Phse dead dnd insulator damaged
		30.11.16	04.45	30.11.16	09.41	Unit tripped on grid disturbance
		20.12.16	19.57	31.01.17	09.22	Stopped due to low demand and high frequency
		04.02.17	07.32	04.02.17	10.00	Unit tripped due to internal fault
		04.02.17	10.00	06.02.17	23.49	Stopped due to low demand and high frequency
		07.02.17	00.00	17.02.17	11.10	Unit tripped due to internal fault
17.02.17	12.10	28.02.17	23.59	Unit tripped due to internal fault		

Unit No	Capacity in MW	Outage		Synchronization		Reason of Outage
		Date	Time	Date	Time	
2	104	01.04.16	00.00	01.04.16	03.18	Stopped due to low demand and high frequency
		06.04.16	08.40	11.04.16	04.31	G.T.-2 was swppped by G.T. -1 and started as desired
		15.04.16	06.06	15.04.16	12.02	Unit stopped
		24.04.16	14.15	25.04.16	06.48	Stopped due to low demand and high frequency
		28.04.16	12.44	28.04.16	13.35	Unit tripped
		06.05.16	11.28	06.05.16	16.00	Unit tripped due to grid disturbance
		06.05.16	16.00	11.05.16	13.27	Unit tripped
		26.05.16	21.18	26.05.16	22.55	Unit tripped
		05.06.16	03:59	08.06.16	15:17	GT2 tripped
		10.06.16	16:50	10.06.16	17:38	GT#2 tripped on grid disturbance.
		13.06.16	19:49	13.06.16	20:54	GT#2 tripped on grid disturbance.
		18.06.16	07:09	18.06.16	09:54	GT#2 tripped on grid disturbance.
		19.06.26	05:58	20.06.16	06:00	Stopped due to low demand and high frequency
		13.07.16	16.29	15.07.16	19.18	Unit tripped
		31.07.16	07.22	03.08.16	14.24	Stopped due to low demand and high frequency
		28.08.16	12.39	28.08.16	16.00	G.T.-2 and STG was tripped due to grid disturbance
		28.08.16	16.00	28.08.16	22.45	Unit unavailable.
		03.09.16	11.05	03.09.16	12.00	Unit was swapped by G.T. -1
		03.09.16	12.00	04.09.16	18.00	Unit was remain unavailable
		04.09.16	18.00	07.09.16	22.58	Stopped due to low demand and high frequency
		01.10.16	15.13	01.10.16	16.00	G.T. -2 & STG tripped on grid disturbance
		08.10.16	13.28	08.10.16	14.15	
		30.11.16	03.13	30.11.16	07.40	GT#2 tripped on grid disturbance
		30.11.16	14.00	30.11.16	23.30	Stopped for inlet air filter
		30.11.16	23.30	01.12.16	06.05	Stopped due to low demand and high frequency
		10.12.16	08.40	10.12.16	09.39	G.T. -2 & STG tripped on grid disturbance
		10.12.16	15.23	10.12.16	15.40	
		16.12.16	22.00	17.12.16	20.45	Unit stopped for compressor washing.
		17.12.16	20.45	19.12.16	04.42	Stopped due to low demand and high frequency
		26.01.17	00.00	27.01.17	05.25	
31.01.17	10.36	04.02.17	07.55	Unit stopped to attend hot spot.		
14.02.17	08.27	14.02.17	10.03	G.T. -2 & STG tripped on grid disturbance		

Unit No	Capacity in MW	Outage		Synchronization		Reason of Outage
		Date	Time	Date	Time	
STG	122	01.04.16	00.00	01.04.16	09.07	Stopped due to low demand and high frequency
		21.04.16	14.59	21.04.16	16.25	STG Tripped
		24.04.16	13.15	24.04.16	21.27	Unit stopped
		29.04.16	11.58	29.04.16	12.46	STG Tripped
		02.05.16	15.57	02.05.16	16.54	STG Tripped
		06.05.16	11.28	06.05.16	12.12	Unit tripped due to grid disturbance
		07.05.16	11.40	07.05.16	13.30	Unit tripped alongwith G.T.-1
		08.05.16	17.49	08.05.16	19.35	STG Tripped
		10.05.16	17.55	10.05.16	23.58	STG Tripped
		13.05.16	19.02	13.05.16	20.50	Stopped due to low demand and high frequency
		05.06.16	14:20	05.06.16	15:06	STG tripped on grid disturbance.
		09.06.16	14:33	09.06.16	16:22	STG tripped on grid disturbance.
		10.06.16	16:50	10.06.16	18:00	STG tripped on grid disturbance.
		13.06.16	12:14	13.06.16	17:46	Stopped due to low demand and high frequency
		13.06.16	19:49	13.06.16	21:34	STG tripped on grid disturbance.
		18.06.16	07:09	18.06.16	10:05	STG tripped on grid disturbance.
		18.06.16	10:09	18.06.16	10:57	STG tripped on GT#1 tripped
		27.06.16	19:06	28.06.16	03:36	Stopped due to low demand and high frequency
		09.07.16	12.53	09.07.16	15.19	Unit tripped
		11.07.16	08.05	11.07.16	10.52	Unit tripped due to grid disturbance
		18.07.16	18.37	18.07.16	19.44	Unit tripped
		30.07.16	09.17	30.07.16	18.23	Stopped due to low demand and high frequency
		31.07.16	07.22	31.07.16	16.17	
		28.08.16	12.39	28.08.16	14.24	Unit tripped due to grid disturbance
		01.10.16	15.13	01.10.16	16.52	G.T. -2 & STG tripped on grid disturbance
		03.10.16	16.16	03.10.16	17.09	Unit tripped on grid disturbance
		08.10.16	13.28	08.10.16	14.59	
		30.11.16	03.13	30.11.16	08.40	
		10.12.16	08.40	10.12.16	10.02	G.T. -2 & STG tripped on grid disturbance
		10.12.16	15.23	10.12.16	16.18	
26.01.17	00.00	27.01.17	07.56	Stopped due to low demand and high frequency		
04.02.17	07.32	04.02.17	09.37	Unit tripped as GT-1 Tripped		
14.02.17	08.27	14.02.17	11.39	G.T. -2 & STG tripped on grid disturbance		
27.02.17	15.27	27.02.17	16.18	Unit stopped to attend hot spot.		

(D) BADARPUR THERMAL POWER STATION

Unit	Capacity in MW	Outage		Synchronization		Reason of Outage
		Date	Time	Date	Time	
1	95	01.04.15	00.00	28.02.17	23.59	Stopped due to low demand and high frequency

Unit	Capacity in MW	Outage		Synchronization		Reason of Outage
		Date	Time	Date	Time	
2	95	24.09.15	19.52	28.02.17	23.59	Stopped due to low demand and high frequency

Unit	Capacity in MW	Outage		Synchronization		Reason of Outage
		Date	Time	Date	Time	
3	95	09.10.15	01.00	28.02.17	23.59	Stopped due to low demand and high frequency

Unit	Capacity in MW	Outage		Synchronization		Reason of Outage
		Date	Time	Date	Time	
4	210	12.12.15	14.30	04.04.16	07.47	Stopped due to low demand and high frequency
		11.04.16	14.03	12.04.16	20.11	Economizer tube leakage
		24.04.16	1621	24.04.16	21.52	PA Fan A lub oil sys temp high
		01.05.16	16.30	01.05.16	17.55	Human Error(Vacuum low)
		10.05.16	05.34	11.05.16	01.39	Boiler Drum Impulse line lkg
		11.05.16	09.08	21.05.16	03.10	Gen Seal problem
		21.05.16	04.04	21.05.16	04.38	ID Fan A Thermal Overload
		21.05.16	15.10	21.05.16	16.45	Relay malfunction (air flow low)
		03.06.16	21.30	05.06.16	07.03	Water Platen Lkg
		09.06.16	14.27	09.06.16	18.22	Grid Disturbance
		01.10.16	15.39	01.10.16	19.57	Unit tripped on grid disturbance
		06.11.16	17.14	07.01.17	23.59	Planned shutdown
08.01.17	00.00	28.02.17	23.59			

Unit	Capacity in MW	Outage		Synchronization		Reason of Outage
		Date	Time	Date	Time	
5	210	24.04.16	16.21	24.04.16	21.52	Stopped due to temp. high.
		06.06.16	09.50	07.06.16	13.53	Water leakage
		09.06.16	14.28	09.06.16	17.11	Tripped due to grid disturbance
		17.07.16	14.30	17.07.16	18.15	Oil surge relay cable inter core shorting.
		09.08.16	22.20	10.08.16	02.29	AVR and excitation system problem.
		01.10.16	15.39	01.10.16	18.57	Tripped due to grid disturbance
		01.10.16	19.02	01.10.16	19.20	Generator protection system
		05.10.16	03.45	07.10.16	08.54	Reheater tube leakage
		17.10.16	21.11	03.12.16	24.00	Planned shutdown
		04.12.16	00.00	20.12.16	24.00	
		21.12.16	00.00	28.02.17	23.59	

(E) BAWANA CCGT POWER STATION

Unit	Capacity in MW	Outage		Synchronization		Reason of Outage
		Date	Time	Date	Time	
1	216	16.07.15	02.18	06.12.16	12.00	Machine tripped due to compressor stalling alarm
		06.12.16	12.00	07.12.16	22.06	Stopped due to low demand and high frequency
		09.12.16	01.26	09.12.16	04.57	Machine tripped on internal fault.
		09.12.16	10.28	09.12.16	11.38	
		07.02.17	19.20	31.03.17	23.59	Stopped due to low demand and high frequency

Unit	Capacity in MW	Outage		Synchronization		Reason of Outage
		Date	Time	Date	Time	
2	216	24.03.16	00.00	03.05.16	06.00	Stopped due to low demand and high frequency
		03.05.16	06.00	03.05.16	09.30	Machine shutdown for planned mtc.
		03.05.16	09.30	13.06.16	15.00	Stopped due to low demand and high frequency
		13.06.16	15.00	16.06.16	17.15	Machine shut down for planned maintenance due to annual testing of generator transformer .
		16.06.16	17.15	26.06.16	09.24	Stopped due to low demand and high frequency
		02.08.16	15.23	02.08.16	15.47	Machine tripped due to failure of primary DPU Card
		06.08.16	11.07	06.08.16	12.50	Machine tripped due to rebooting of Mark VI.
		01.09.16	08.45	05.09.16	12.00	Machine shutdown for attending internal fault
		05.09.16	12.00	30.11.16	23.59	Stopped due to low demand and high frequency
		08.12.16	06.35	31.03.17	23.59	

Unit	Capacity in MW	Outage		Synchronization		Reason of Outage
		Date	Time	Date	Time	
STG-1	254	28.03.16	00.00	15.04.16	10.00	Planned Shut down.
		15.04.16	10.00	03.05.16	06.00	Stopped due to low demand and high frequency
		03.05.16	06.00	03.05.16	09.30	Machine shutdown for planned mtc.
		03.05.16	09.30	13.06.16	15.00	Stopped due to low demand and high frequency
		13.06.16	15.00	16.06.16	17.15	Machine shut down for planned maintenance due to annual testing of generator transformer .
		16.06.16	17.15	26.06.16	15.20	Stopped due to low demand and high frequency
		02.08.16	15.29	02.08.16	16.14	Machine tripped due to failure of primary DPU Card
		06.08.16	11.07	06.08.16	13.59	Machine tripped due to rebooting of Mark VI.
		01.09.16	08.45	05.09.16	12.00	Machine shutdown for attending internal fault
		05.09.16	12.00	30.11.16	23.59	Stopped due to low demand and high frequency
		04.12.16	07.07	04.12.16	09.16	
		07.12.16	08.16	07.12.16	11.55	
		09.12.16	01.27	09.12.16	08.48	
		09.12.16	10.28	09.12.16	12.28	
07.02.17	19.24	31.03.17	23.59			

Unit	Capacity in MW	Outage		Synchronization		Reason of Outage
		Date	Time	Date	Time	
3	216	08.01.16	23.15	18.04.16	05.23	Stopped due to low demand and high frequency
		18.04.16	11.16	18.04.16	19.12	Unit tripped
		03.05.16	06.08	03.05.16	08.57	Machine shutdown for planned mtc.
		23.05.16	19.04	10.08.16	14.00	Stopped due to low demand and high frequency
		10.08.16	14.00	18.08.16	00.00	Machine is shutdown for palnnd mtc.
		01.09.16	00.00	19.09.16	18.59	Stopped due to low demand and high frequency
		23.09.16	23.59	29.09.16	22.16	
		07.10.16	11.43	07.10.16	15.48	Machine tripped due to stator earth fault.
		14.10.16	17.30	28.03.17	17.48	Stopped due to low demand and high frequency

Unit	Capacity in MW	Outage		Synchronization		Reason of Outage
		Date	Time	Date	Time	
4	216	08.01.16	23.15	03.05.16	06.00	Stopped due to low demand and high frequency
		03.05.16	06.00	03.05.16	09.30	Machine shutdown for planned mtc.
		03.05.16	09.30	27.05.16	01.12	Stopped due to low demand and high frequency
		30.05.16	11.16	05.09.16	00.44	
		05.10.16	13.00	14.10.16	13.30	
		29.10.16	00.02	31.10.16	23.59	
		01.11.16	00.00	09.11.16	23.59	
		30.11.16	08.50	30.11.16	17.43	Unit desynchronised as inlet air DP high.
		30.11.16	17.43	07.02.17	17.39	Stopped due to low demand and high frequency
		08.03.17	14.12	08.03.17	15.35	Unit tripped due ot grid disturbanck
		29.03.17	10.20	29.03.17	13.41	Unit tripped due to internal fault.

Unit	Capacity in MW	Outage		Synchronization		Reason of Outage
		Date	Time	Date	Time	
STG-2	254	28.03.16	00.00	30.04.16	23.59	Planned shutdown
		03.05.16	06.00	03.05.16	09.30	Machine shutdown for planned mtc.
		03.05.16	06.10	03.05.16	10.39	Machine shutdown for planned mtc.
		06.05.16	16.45	06.05.16	17.44	Unit tripped
		23.05.16	19.06	27.05.16	08.24	Stopped due to low demand and high frequency
		27.05.16	11.18	05.09.16	11.03	
		20.09.16	07.05	20.09.16	08.02	HRS#3 taken out of service due to internal fault.
		07.10.16	11.43	07.10.16	17.48	STG desynchronized due to tripping of unit -3
		18.10.16	03.55	18.10.16	10.10	Machine tripped due to internal problem
		29.10.16	00.03	31.10.16	23.59	Stopped due to low demand and high frequency
		01.11.16	00.00	10.11.16	04.07	
		10.11.16	05.38	10.11.16	07.44	Unit desynchronised on internal fault.
		11.11.16	14.57	11.11.16	15.34	Unit desynchronised on internal fault.
		30.11.16	08.52	30.11.16	17.43	STG#2 desynchronised as inlet air DP high.
		30.11.16	17.43	07.02.17	18.46	Stopped due to low demand and high frequency
		12.02.17	20.15	07.02.17	21.36	Unit tripped on cold gas temp high.
		03.03.17	16.00	03.03.17	16.39	Unit tripped due to internal fault.
		08.03.17	14.12	08.03.17	17.04	Unit tripped due to grid disturbance
27.03.17	13.40	27.03.17	14.44	Unit tripped due to internal fault.		

(F) RITHALA POWER STATION

Unit	Capacity in MW	Outage		Synchronization		Reason of Outage
		Date	Time	Date	Time	
1	31.8	19.03.13	17:32	31.03.17	23.59	Stopped due to low demand and high frequency

Unit	Capacity in MW	Outage		Synchronization		Reason of Outage
		Date	Time	Date	Time	
2	31.8	07.06.13	22:41	31.03.17	23.59	Stopped due to low demand and high frequency

Unit	Capacity in MW	Outage		Synchronization		Reason of Outage
		Date	Time	Date	Time	
STG	31.8	07.06.13	22:38	31.03.17	23.59	Stopped due to low demand and high frequency

ALLOCATION OF POWER TO DELHI

A)

Time block 00.00hrs. to 24.00hrs. @ 0% allocation from Unallocated Quota from 01.04.2016

Name of the Stn	Installed capacity	Total Un-allocated	Basic Allocation	Basic Allocation at periphery	Allocation out of Unallocated Quota	Allocation out of Un-allocation Quota at Delhi periphery	Total allocation at Delhi periphery
1	2	3	4	5	6	7	(8)=(5)+(7)
<u>NTPC STATIONS</u>							
Singrauli STPS	2000	300	150	130	0	0	130
Rihand-I	1000	150	100	87	0	0	87
Rihand Stage -II	1000	150	126	109	0	0	109
Rihand Stage -III	1000	150	132	115	0	0	115
ANTA GPS	419	63	44	41	0	0	41
Auriya GPS	663.36	99	72	67	0	0	67
Dadri GPS	829.78	129	91	85	0	0	85
Dadri NCTPS (Th)	840	0	756	657	0	0	657
Dadri NCTPS (Th) Stage-II	980	147	735	639	0	0	639
Unchahaar-I TPS	420	20	24	21	0	0	21
Unchahaar-II TPS	420	63	47	41	0	0	41
Unchahaar-III TPS	210	31	29	25	0	0	25
Koldam HEP	800	120	56	53	0	0	53
TOTAL	10582	1422	2362	2069	0	0	2069
<u>NHPC</u>							
Baira Suil HPS	180	0	20	19	0	0	19
Salal HPS	690	0	80	76	0	0	76
Tanakpur HEP	94	0	12	11	0	0	11
Chamera HEP	540	0	43	41	0	0	41
Chamera-II HEP	300	54	40	38	0	0	38
Chamera-III HEP	231	35	29	28	0	0	28
URI-I HEP	480	0	53	50	0	0	50
URI-II HEP	240	0	32	31	0	0	31
Sewa HEP	120	18	16	15	0	0	15
Dhauri Ganga HEP	280	42	37	35	0	0	35
Dulhasti HEP	390	58	50	48	0	0	48
Parbati-III HEP	520	66	66	63	0	0	63
TOTAL	4065	272	479	455	0	0	455
<u>NPC</u>							
Narora APS	440	64	47	41	0	0	41
RAPP (C)	440	64	56	49	0	0	49
TOTAL	880	128	103	89	0	0	89
<u>SJVNL</u>							
Nathpa Jhakri HEP	1500	149	142	135	0	0	135
<u>THDC</u>							
Tehri Hydro	1000	99	63	60	0	0	60
Koteshwar HEP	400	40	39	37	0	0	37
TOTAL	1400	139	102	97	0	0	97
Total	18427	2110	3188	2846	0	0	2846
<u>Allocation from ER and Tala HEP</u>							
Farakka	1600	0	22	19	0	0	19
Kahalgaon	840	0	51	43	0	0	43
Talchar	1000	0	0	0	0	0	0
Tala HEP	1020	153	30	25	0	0	25
Kahalgaon-II	1500	0	157	131	0	0	131
Total ER	5960	153	261	217	0	0	217
<u>Joint Venture</u>							
Jhajjar TPS	1500	114	693	622	0	0	622
Ultra Mega Projects							
Sasan	3960	0	446	383	0	0	383
Grand Total	29847	2377	4587	4068	0	0	4068

A)

Time block 00.00hrs. to 24.00hrs. @ 0% allocation from Unallocated Quota from 05.08.2016

Name of the Stn	Installed capacity	Total Un-allocated	Basic Allocation	Basic Allocation at periphery	Allocation out of Unallocated Quota	Allocation out of Un-allocation Quota at Delhi periphery	Total allocation at Delhi periphery
1	2	3	4	5	6	7	(8)=(5)+(7)
<u>NTPC STATIONS</u>							
Singrauli STPS	2000	300	150	130	0	0	130
Rihand-I	1000	150	100	87	0	0	87
Rihand Stage -II	1000	150	126	109	0	0	109
Rihand Stage -III	1000	150	132	115	0	0	115
ANTA GPS	419	63	44	41	0	0	41
Auriya GPS	663.36	99	72	67	0	0	67
Dadri GPS	829.78	129	91	85	0	0	85
Dadri NCTPS (Th)	840	0	756	657	0	0	657
Dadri NCTPS (Th) Stage-II	980	147	730	634	0	0	634
Unchahaar-I TPS	420	20	24	21	0	0	21
Unchahaar-II TPS	420	63	47	41	0	0	41
Unchahaar-III TPS	210	31	29	25	0	0	25
Koldam HEP	800	120	56	53	0	0	53
TOTAL	10582	1422	2357	2065	0	0	2065
<u>NHPC</u>							
Baira Suil HPS	180	0	20	19	0	0	19
Salal HPS	690	0	80	76	0	0	76
Tanakpur HEP	94	0	12	11	0	0	11
Chamera HEP	540	0	43	41	0	0	41
Chamera-II HEP	300	54	40	38	0	0	38
Chamera-III HEP	231	35	29	28	0	0	28
URI-I HEP	480	0	53	50	0	0	50
URI-II HEP	240	0	32	31	0	0	31
Sewa HEP	120	18	16	15	0	0	15
Dhauri Ganga HEP	280	42	37	35	0	0	35
Dulhasti HEP	390	58	50	48	0	0	48
Parbati-III HEP	520	66	66	63	0	0	63
TOTAL	4065	272	479	455	0	0	455
<u>NPC</u>							
Narora APS	440	64	47	41	0	0	41
RAPP (C)	440	64	56	49	0	0	49
TOTAL	880	128	103	89	0	0	89
<u>SVJNL</u>							
Nathpa Jhakri HEP	1500	149	142	135	0	0	135
<u>THDC</u>							
Tehri Hydro	1000	99	63	60	0	0	60
Koteshwar HEP	400	40	39	37	0	0	37
TOTAL	1400	139	102	97	0	0	97
Total	18427	2110	3183	2842	0	0	2842
<u>Allocation from ER and Tala HEP</u>							
Farakka	1600	0	22	19	0	0	19
Kahalgaon	840	0	51	43	0	0	43
Talchar	1000	0	0	0	0	0	0
Tala HEP	1020	153	30	25	0	0	25
Kahalgaon-II	1500	0	157	131	0	0	131
Total ER	5960	153	261	217	0	0	217
<u>Joint Venture</u>							
Jhajjar TPS	1500	114	693	622	0	0	622
<u>Ultra Mega Projects</u>							
Sasan	3960	0	446	383	0	0	383
Grand Total	29847	2377	4582	4064	0	0	4064

5 ALLOCATION OF POWER TO DISCOMS

A) ALLOCATION OF POWER TO VARIOUS LICENCEES AS PER ORDER OF DERC AND DECISION OF GNCTD FOR ALLOCATION OF CENTRAL SECTOR STATIONS (DADRI THERMAL & BTPS) AND STATE SECTOR GENERATING STATIONS w.e.f. 06.08.2013.

(Allocation In %)

(A) 10.00hrs. to 17.00hrs.

SOURCES	LICENSEES					
	NDMC	MES	NDPL	BRPL	BYPL	TOTAL
1. Central Sector without Dadri (Th)	0	0	29.18	43.58	27.24	100.00
2. Dadri (Th)	16.63	0	24.22	36.86	22.39	100.00
3. BTPS	17.73	7.09	21.81	33.2	20.17	100.00
4. RPH	0	0	29.025	44.133	26.842	100.00
5. GT	0	0	29.02	44.16	26.82	100.00
6. Pragati	30.3	0	20.22	30.78	18.7	100.00
7. DVC	0	0	29.18	43.58	27.24	100.00
8. BAWANA CCGT*	7.30	1.82	20.688	30.888	19.304	80.00

(B) 00.00hrs. to 10.00hrs. and 17.00hrs. to 24.00hrs.

SOURCES	LICENSEES					
	NDMC	MES	NDPL	BRPL	BYPL	TOTAL
1. Central Sector without Dadri (Th)	0	0	29.18	43.58	27.24	100.00
2. Dadri (Th)	16.53	0	24.22	36.86	22.39	100.00
3. BTPS	17.73	7.09	21.81	33.2	20.17	100.00
4. RPH	0	0	29.025	44.133	26.842	100.00
5. GT	0	0	29.02	44.16	26.82	100.00
6. Pragati	30.3	0	20.22	30.78	18.7	100.00
7. DVC	0	0	29.18	43.58	27.24	100.00
8. BAWANA CCGT*	7.30	1.82	20.688	30.888	19.304	80.00

* 20% POWER OF BAWANA CCGT ALLOCATED TO HARYANA (10%) & PUNJAB (10%)

**POWER AVAILABILITY-DEMAND POSITION AT THE TIME OF PEAK DEMAND
MET DURING MARCH 2017**

Date	Time of peak demand	Generation within Delhi										Import from the Grid	Schedule from the Grid	OD(-) / UD(+)	Demand met	Shedding	Un-Restricted Demand
		RP H	GT	PPCL	Rithal a	Bawana	Tow mcl	East Delhi	DMS WL	BTPS	Total						
(1)	(2)	(3)	(4)	(5)	(6)	(7)	(8)				(9)= (3) to (8)	(10)	(11)	(12)= (11) - (10)	(13)= (11)+ (12)	(14)	(15)= (13)+ (14)
1	10.17.19	0	70	154	0	251	14	0	14	0	489	2862	2810	52	3351	0	3351
2	10.21.05	0	72	154	0	310	16	0	9	-2	550	2832	2706	126	3382	0	3382
3	10.06.32	0	53	154	0	249	16	0	10	-2	470	2994	2857	137	3464	0	3464
4	09.59.53	0	73	158	0	250	16	0	16	-4	493	2727	2698	29	3220	0	3220
5	10.36.17	0	73	157	0	250	16	0	19	-4	492	2693	2667	26	3185	0	3185
6	10.16.19	0	72	156	0	251	14	2	12	-4	489	2833	2722	111	3322	0	3322
7	11.16.57	0	71	151	0	252	16	8	15	-4	486	2964	2712	252	3450	0	3450
8	10.03.06	0	74	156	0	260	10	4	-2	-4	496	2926	2785	141	3422	0	3422
9	10.21.58	0	73	154	0	254	16	3	0	-4	493	2903	2812	91	3396	0	3396
10	10.31.25	0	73	156	0	253	19	0	14	-4	497	2975	2828	147	3472	0	3472
11	09.51.30	0	73	0	0	252	5	-2	-2	-4	326	3002	2879	123	3328	0	3328
12	10.00.00	0	70	0	0	253	16	0	5	-4	335	2671	2754	-83	3006	0	3006
13	13.44.43	0	69	0	0	251	16	8	18	-4	332	2022	1855	167	2354	0	2354
14	09.50.50	0	38	0	0	250	19	6	10	-4	303	2731	2693	38	3034	0	3034
15	09.45.10	0	37	0	0	250	16	4	0	-4	299	3026	2889	137	3325	0	3325
16	10.02.00	0	36	0	0	257	16	5	3	-4	305	3005	2897	108	3310	0	3310
17	10.25.41	0	36	59	0	316	16	5	8	-4	423	3047	2855	192	3470	0	3470
18	10.00.53	0	37	155	0	251	16	5	15	-4	455	2751	2781	-30	3206	0	3206
19	10.37.32	0	36	156	0	253	16	7	18	-4	457	2652	2610	42	3109	0	3109
20	11.30.00	0	35	153	0	253	16	6	20	-3	454	2780	2624	156	3234	0	3234
21	10.26.57	0	76	155	0	283	16	-1	8	-3	527	2803	2704	99	3330	0	3330
22	10.40.16	0	74	150	0	251	13	4	5	-3	494	2972	2869	103	3466	0	3466
23	19.06.39	0	95	145	0	250	16	3	6	-3	512	3157	2932	225	3669	0	3669
24	10.45.58	0	66	150	0	252	15	0	15	-2	496	3170	3061	109	3666	0	3666
25	18.52.39	0	66	147	0	248	16	5	16	-2	496	2966	2890	76	3462	0	3462
26	19.38.38	0	66	150	0	251	16	-2	16	-2	495	2729	2649	80	3224	0	3224
27	19.15.00	0	64	149	0	254	16	0	0	-3	480	3242	3155	87	3722	0	3722
28	19.30.00	0	118	146	0	310	16	0	14	-3	601	3186	3120	66	3787	0	3787
29	19.13.51	0	126	143	0	500	10	-1	10	-3	785	3182	3201	-19	3967	0	3967
30	19.18.01	0	126	147	0	501	12	0	15	-3	798	3318	3149	169	4116	0	4116
31	19.22.48	0	126	144	0	501	14	0	19	151	955	3184	3152	32	4139	0	4139

POWER AVAILABILITY- DEMAND POSITION AT THE TIME OF MAXIMUM UNRESTRICTED DEMAND DURING MARCH 2017

Date	Time of peak demand	Generation within Delhi										Import from the Grid	Schedule from the Grid	OD(-)/UD(+)	Demand met	Shedding	Un-Restricted Demand
		RP H	GT	PPCL	Rithala	Bawana	Towmcl	East Delhi	DMS WL	BTPS	Total						
(1)	(2)	(3)	(4)	(5)	(6)	(7)	(8)				(9)=(3) to (8)	(10)	(11)	(12)=(11) - (10)	(13)=(11)+ (12)	(14)	(15)=(13)+ (14)
1	10.17.19	0	70	154	0	251	14	0	14	0	489	2862	2810	52	3351	0	3351
2	10.21.05	0	72	154	0	310	16	0	9	-2	550	2832	2706	126	3382	0	3382
3	10.06.32	0	53	154	0	249	16	0	10	-2	470	2994	2857	137	3464	0	3464
4	09.59.53	0	73	158	0	250	16	0	16	-4	493	2727	2698	29	3220	0	3220
5	10.36.17	0	73	157	0	250	16	0	19	-4	492	2693	2667	26	3185	0	3185
6	10.16.19	0	72	156	0	251	14	2	12	-4	489	2833	2722	111	3322	0	3322
7	11.16.57	0	71	151	0	252	16	8	15	-4	486	2964	2712	252	3450	0	3450
8	10.03.06	0	74	156	0	260	10	4	-2	-4	496	2926	2785	141	3422	0	3422
9	10.21.58	0	73	154	0	254	16	3	0	-4	493	2903	2812	91	3396	0	3396
10	10.31.25	0	73	156	0	253	19	0	14	-4	497	2975	2828	147	3472	0	3472
11	09.51.30	0	73	0	0	252	5	-2	-2	-4	326	3002	2879	123	3328	0	3328
12	10.00.00	0	70	0	0	253	16	0	5	-4	335	2671	2754	-83	3006	0	3006
13	13.44.43	0	69	0	0	251	16	8	18	-4	332	2022	1855	167	2354	0	2354
14	09.50.50	0	38	0	0	250	19	6	10	-4	303	2731	2693	38	3034	0	3034
15	09.45.10	0	37	0	0	250	16	4	0	-4	299	3026	2889	137	3325	0	3325
16	10.02.00	0	36	0	0	257	16	5	3	-4	305	3005	2897	108	3310	0	3310
17	10.25.41	0	36	59	0	316	16	5	8	-4	423	3047	2855	192	3470	0	3470
18	10.00.53	0	37	155	0	251	16	5	15	-4	455	2751	2781	-30	3206	0	3206
19	10.37.32	0	36	156	0	253	16	7	18	-4	457	2652	2610	42	3109	0	3109
20	11.30.00	0	35	153	0	253	16	6	20	-3	454	2780	2624	156	3234	0	3234
21	10.26.57	0	76	155	0	283	16	-1	8	-3	527	2803	2704	99	3330	0	3330
22	10.40.16	0	74	150	0	251	13	4	5	-3	494	2972	2869	103	3466	0	3466
23	19.06.39	0	95	145	0	250	16	3	6	-3	512	3157	2932	225	3669	0	3669
24	10.45.58	0	66	150	0	252	15	0	15	-2	496	3170	3061	109	3666	0	3666
25	18.52.39	0	66	147	0	248	16	5	16	-2	496	2966	2890	76	3462	0	3462
26	19.38.38	0	66	150	0	251	16	-2	16	-2	495	2729	2649	80	3224	0	3224
27	19.15.00	0	64	149	0	254	16	0	0	-3	480	3242	3155	87	3722	0	3722
28	19.30.00	0	118	146	0	310	16	0	14	-3	601	3186	3120	66	3787	0	3787
29	19.13.51	0	126	143	0	500	10	-1	10	-3	785	3182	3201	-19	3967	0	3967
30	19.18.01	0	126	147	0	501	12	0	15	-3	798	3318	3149	169	4116	0	4116
31	19.22.48	0	126	144	0	501	14	0	19	151	955	3184	3152	32	4139	0	4139

SOURCEWISE SCHEDULED DRAW FROM NORTHERN GRID AS WELL AS AVAILABILITY WITHIN DELHI FOR MARCH 2017

A) AVAILABILITY FROM GENCO AND PRAGATI STNs. (all fig in MUs)

A (i) RPH	0.000
(ii) GT+STG	57.661
(iii) PRAGATI	93.469
(iv) RITHALA	0.000
(v) BAWANA CCGT	213.128
(vi) Timarpur ó Okhla	13.705
EDWPCL	2.435
DMSWL	9.975
TOTAL	390.373
B) AVAILABILITY FROM BTPS	-3.412
C) AUXILIARY CONSUMPTION OF GENERATING STNs. EXCLUDING BTPS	17.501
D) NET GENERATION AVAILABLE WITHIN DELHI(A+B-C)	369.460

B) SOURCE WISE SCHEDULED DRAW FROM THE NORTHERN GRID

NAME OF THE STATION	AVAILABILITY AT POWER PLANT	AVAILABILITY AT DELHI PERIPHERY	ALLOCATION MADE BY NRLDC AT POWER PLANT	ALLOCATION MADE BY NRLDC AT DELHI PERIPHERY
B/SUIL	7.069	6.885	7.069	6.885
SALAL	19.757	19.241	19.757	19.241
SASAN	274.293	266.929	265.277	258.163
TANKAPUR	0.446	0.435	0.446	0.434
CHAMERA	10.786	10.506	10.786	10.506
CHAMERA -II	7.299	7.110	7.299	7.110
CHAMERA -III	0.000	0.000	0.000	0.000
DHAULIGANGA	3.729	3.632	3.729	3.632
SEWA -2	1.225	1.200	1.225	1.200
URI	0.766	0.750	0.766	0.750
URI-II	23.147	22.524	23.147	22.524
KOLDAM	0.000	0.000	0.000	0.000
KOTESHWAR	9.331	9.080	9.331	9.080
PARBATI3	1.849	1.801	1.849	1.801
RAMPUR	0.000	0.000	0.000	0.000
MUNDRA_UMPP	0.000	0.000	0.000	0.000
ANTA (GAS)	10.598	10.305	4.559	4.433
ANTA (RLNG)	0.000	0.000	0.000	0.000
ANTA (LIQUID)	15.446	15.033	0.000	0.000
DADRI (GAS)	14.340	13.968	5.270	5.139
DADRI (RLNG)	0.000	0.000	0.000	0.000
DADRI (LIQUID)	10.694	10.394	0.000	0.000
AURAIYA (GAS)	7.946	7.726	4.638	4.510
AURAIYA (RLNG)	0.000	0.000	0.000	0.000
AURAIYA (LIQUID)	44.083	42.902	0.000	0.000
SINGRAULI	98.301	95.652	94.518	91.974
RIHAND -I	65.669	63.904	54.844	53.376
RIHAND -II	89.807	87.387	79.007	76.887
RIHAND -III	94.442	91.895	85.682	83.377
UNCHAHAAR-I	17.294	16.828	12.228	11.903
UNCHAHAAR-II	33.718	32.810	24.418	23.770
UNCHAHAAR-III	20.802	20.242	14.787	14.392
DADRI (TH)	545.724	531.025	151.070	147.148
DADRI (TH) STAGE-II	481.966	468.760	217.803	211.946
NAPP	32.442	31.567	32.442	31.567

NAME OF THE STATION	AVAILABILITY AT POWER PLANT	AVAILABILITY AT DELHI PERIPHERY	ALLOCATION MADE BY NRLDC AT POWER PLANT	ALLOCATION MADE BY NRLDC AT DELHI PERIPHERY
RAPP 'B'	0.000	0.000	0.000	0.000
RAPP 'C'	31.591	30.730	31.591	30.730
NATHPA JHAKRI	19.389	18.877	14.654	14.266
DULASTI	11.938	11.625	11.938	11.625
TEHRI	13.924	13.548	13.924	13.548
JHAJJAR	492.550	479.284	65.697	63.960
KHELGAON	34.107	33.186	20.594	20.044
KHELGAON-II	110.413	107.439	76.827	74.769
FARAKA	12.757	12.411	7.814	7.605
TALA	2.270	2.210	2.269	2.210
TALCHER	0.000	0.000	0.000	0.000
DVC	234.189	231.855	231.855	225.558
HARYANA	0.204	0.203	0.203	0.199
CHATTISHGARH	0.031	0.031	0.031	0.030
MEGHALAYA	0.629	0.624	0.624	0.611
UTTRANCHAL	0.000	0.000	0.000	0.000
ASSAM	0.000	0.000	0.000	0.000
MADHYA PRADESH	0.103	0.101	0.101	0.099
METHON POWER(NDPL)LT-06	159.319	157.705	157.705	153.399
DVC MEJIA (LT-08)(BYPL)	68.848	68.166	68.166	66.338
URS	2.516	2.449	2.516	2.449
JAMMU & KASHMIR	5.093	5.046	5.046	4.910
HIMACHAL PRADESH	1.259	1.241	1.241	1.209
PUNJAB	0.000	0.000	0.000	0.000
UTTAR PRADESH	0.000	0.000	0.000	0.000
ORISSA	0.409	0.406	0.406	0.397
DVC LT-9	0.000	0.000	0.000	0.000
HARYANA (LT-05)	7.633	7.562	7.562	7.353
RAJASTHAN	0.000	0.000	0.000	0.000
NEPAL	0.000	0.000	0.000	0.000
RAJASTHAN(SOLAR) BRPL-LT36	3.769	3.687	3.687	3.588
RAJASTHAN(SOLAR) BYPL - LT-35	3.731	3.650	3.650	3.552
RAJASTHAN(SOLAR) TPDDL LT-31	3.622	3.544	3.544	3.448
TO JHARKHAND	-3.506	-3.546	-3.546	-3.627
TO ANDHRA	-0.290	-0.294	-0.294	-0.303
TO KERALA	-5.988	-6.139	-6.139	-6.307
TO MEGHALAYA	-25.508	-26.204	-26.204	-26.927
TO UTTAR PRADESH	-46.909	-48.315	-48.315	-49.651
TO UTTRANCHAL	0.000	0.000	0.000	0.000
TO GOA	-5.956	-6.088	-6.088	-6.257
TO BIHAR	-50.822	-51.721	-51.721	-53.153
TO RAJASTHAN	-17.453	-17.979	-17.979	-18.487
TO NEPAL	-18.098	-18.265	-18.265	-18.770
BTPS TO MP	0.000	0.000	0.000	0.000
TO HIMACHAL PRADESH	-16.375	-16.745	-16.745	-17.223
TO HARYANA	-2.181	-2.214	-2.214	-2.278
POWER EXCHANGE(IEX)	70.781	68.939	70.781	68.939
TO POWER EXCHANGE (IEX)	-78.455	-80.683	-78.455	-80.683
POWER EXCHANGE(PX)	0.000	0.000	0.000	0.000
TO POWER EXCHANGE (PX)	0.000	0.000	0.000	0.000
TO SHARE PROJECT (HARYANA)	-17.866	-18.361	-17.866	-18.361
TO SHARE PROJECT (PUNJAB)	-17.871	-18.366	-17.871	-18.366
TOTAL	2926.768	2840.090	1622.676	1562.190

C) AGENCY WISE BREAKUP OF ENERGY SCHEDULED DRAW FROM THE GRID

NAME OF THE STATION	AVAILABILITY AT POWER PLANT	AVAILABILITY AT DELHI PERIPHERY	ALLOCATION MADE BY NRLDC AT POWER PLANT	ALLOCATION MADE BY NRLDC AT DELHI PERIPHERY
NTPC - NR	1550.831	1508.832	748.824	728.854
NTPC - ER	157.277	153.036	105.235	102.418
NHPC	88.013	85.708	88.013	85.708
NPC	64.033	62.296	64.033	62.296
SASAN	274.293	266.929	265.277	258.163
KOTESHWAR	9.331	9.080	9.331	9.080
MUNDRA_UMPP	0.000	0.000	0.000	0.000
NATHPA JHAKRI	19.389	18.877	14.654	14.266
TEHRI	13.924	13.548	13.924	13.548
TALA	2.270	2.210	2.269	2.210
JHAJJAR	492.550	479.284	65.697	63.960
TALCHER	0.000	0.000	0.000	0.000
RAJASTHAN SOLAR(BRPL)T-36	3.769	3.687	3.687	3.588
RAJASTHAN SOLAR(BYPL)T-35	3.731	3.650	3.650	3.552
RAJASTHAN SOLAR(TPDDL)T-31	3.622	3.544	3.544	3.448
DVC	234.189	231.855	231.855	225.558
HARYANA	0.204	0.203	0.203	0.199
CHATTISHGARH	0.031	0.031	0.031	0.030
MEGHALAYA	0.629	0.624	0.624	0.611
UTTRANCHAL	0.000	0.000	0.000	0.000
ASSAM	0.000	0.000	0.000	0.000
MADHYA PRADESH	0.103	0.101	0.101	0.099
METHON POWER (NDPL)-LT-06	159.319	157.705	157.705	153.399
DVC MEJIA (LT-08)(BYPL)	68.848	68.166	68.166	66.338
URS	2.516	2.449	2.516	2.449
JAMMU & KASHMIR	5.093	5.046	5.046	4.910
HIMACHAL PRADESH	1.259	1.241	1.241	1.209
PUNJAB	0.000	0.000	0.000	0.000
UTTAR PRADESH	0.000	0.000	0.000	0.000
ORISSA	0.409	0.406	0.406	0.397
DVC (FOR NDPL) LT-09	0.000	0.000	0.000	0.000
HARYANA (LT -05)	7.633	7.562	7.562	7.353
RAJASTHAN	0.000	0.000	0.000	0.000
NEPAL	0.000	0.000	0.000	0.000
POWER EXCHANGE(IEX)	70.781	68.939	70.781	68.939
POWER EXCHANGE(PX)	0.000	0.000	0.000	0.000
TOTAL	3234.046	3155.009	1934.377	1882.584

D) AGENCY WISE BREAKUP OF ENERGY SCHEDULED BY NRLDC FOR EXPORT TO OTHER UTILITIES FROM DTL

NAME OF THE STATION	AVAILABILITY AT POWER PLANT	AVAILABILITY AT PERIPHERY	ALLOCATION MADE BY NRLDC AT POWER PLANT	ALLOCATION MADE BY NRLDC AT POWER PERIPHERY
TO JHARKHAND	-3.506	-3.546	-3.546	-3.627
TO ANDHRA	-0.290	-0.294	-0.294	-0.303
TO KERALA	-5.988	-6.139	-6.139	-6.307
TO MEGHALAYA	-25.508	-26.204	-26.204	-26.927
TO UTTANCHAL	0.000	0.000	0.000	0.000
TO UTTAR PRADESH	-46.909	-48.315	-48.315	-49.651
TO GOA	-5.956	-6.088	-6.088	-6.257
TO BIHAR	-50.822	-51.721	-51.721	-53.153
TO RAJASTHAN	-17.453	-17.979	-17.979	-18.487
TO NEPAL	-18.098	-18.265	-18.265	-18.770
BTPS TO MP	0.000	0.000	0.000	0.000
TO HIMACHAL PRADESH	-16.375	-16.745	-16.745	-17.223
TO HARYANA	-2.181	-2.214	-2.214	-2.278
TO POWER EXCHANGE (IEX)	-78.455	-80.683	-78.455	-80.683
TO POWER EXCHANGE (PX)	0.000	0.000	0.000	0.000
TO SHARE PROJECT (HARYANA)	-17.866	-18.361	-17.866	-18.361
TO SHARE PROJECT (PUNJAB)	-17.871	-18.366	-17.871	-18.366
TOTAL	-307.278	-314.919	-311.701	-320.393
TOTAL SCHEDULED DRAWAL FROM THE GRID	2926.768	2840.090	1622.676	1562.190

TOTAL CONSUMPTION INCLUDING AUX. OF GENERATING STNs. EXCLUDING BTPS		1985.450
NET CONSUMPTION		1967.949
AVAILABILITY WITHIN DELHI		369.460
ACTUAL DRAWAL FROM THE GRID		1598.489
OVER DRAWAL(+)/UNDER DRAWAL(-) FROM THE GRID ON THE BASIS OF SCHEDULED ALLOCATION MADE BY NRLDC TO DELHI AT PERIPHERY		32.299
LOAD SHEDDING		0.980
UNRESTRICTED DEMAND (GROSS)		1986.430
UNRESTRICTED DEMAND (NET)		1968.929
MAX. NET CONSUMPTION		87.421 ON 31.03.2017
MAX. LOAD SHEDDING		294MW ON 30.03.2017 AT 14.30HRS.
PEAK LOAD	Peak Demand during the month	
DAY PEAK	4101MW AT 15.30.00HRS ON 31.03.2017	
EVENING PEAK	4139MW AT 19.22.48HRS ON 31.03.2017	
P.L.F. OF GENCO AND PRAGATI STNs.	RPH	0.00%
	GT	28.70%
	PRAGATI	38.07%
	RITHALA	0.00%
	BAWANA	20.89%
	Timarpur Okhla	115.13%
	EDWPCL	27.27%
	DMSWL	55.86%
		SHEDDING AT PEAK TIME

DATE	No. of Under Freq. Relay Operated	Shedding due to under frequency relay operation in MUs					Shedding due to Grid Restrictions (Over drawal / low freq.)				
		BSES		NDPL	NDMC	TOTAL	BSES		NDPL	NDMC	MES
		BYPL	BRPL				BYPL	BRPL			
1	2	3	4	5	6	7=3 to 6	8	9	10	11	12
01.Mar.17	0	0.000	0.000	0.000	0.000	0.000	0.000	0.000	0.000	0.000	0.000
02.Mar.17	0	0.000	0.000	0.000	0.000	0.000	0.000	0.000	0.000	0.000	0.000
03.Mar.17	0	0.000	0.000	0.000	0.000	0.000	0.000	0.000	0.000	0.000	0.000
04.Mar.17	0	0.000	0.000	0.000	0.000	0.000	0.000	0.000	0.000	0.000	0.000
05.Mar.17	0	0.000	0.000	0.000	0.000	0.000	0.000	0.000	0.000	0.000	0.000
06.Mar.17	0	0.000	0.000	0.000	0.000	0.000	0.000	0.000	0.000	0.000	0.000
07.Mar.17	0	0.000	0.000	0.000	0.000	0.000	0.000	0.000	0.000	0.000	0.000
08.Mar.17	0	0.000	0.000	0.000	0.000	0.000	0.000	0.000	0.019	0.000	0.000
09.Mar.17	0	0.000	0.000	0.000	0.000	0.000	0.000	0.000	0.000	0.000	0.000
10.Mar.17	0	0.000	0.000	0.000	0.000	0.000	0.000	0.000	0.000	0.000	0.000
11.Mar.17	0	0.000	0.000	0.000	0.000	0.000	0.000	0.000	0.000	0.000	0.000
12.Mar.17	0	0.000	0.000	0.000	0.000	0.000	0.000	0.000	0.000	0.000	0.000
13.Mar.17	0	0.000	0.000	0.000	0.000	0.000	0.000	0.000	0.000	0.000	0.000
14.Mar.17	0	0.000	0.000	0.000	0.000	0.000	0.000	0.000	0.000	0.000	0.000
15.Mar.17	0	0.000	0.000	0.000	0.000	0.000	0.000	0.000	0.000	0.000	0.000
16.Mar.17	0	0.000	0.000	0.000	0.000	0.000	0.000	0.000	0.000	0.000	0.000
17.Mar.17	0	0.000	0.000	0.000	0.000	0.000	0.000	0.000	0.000	0.000	0.000
18.Mar.17	0	0.000	0.000	0.000	0.000	0.000	0.000	0.000	0.000	0.000	0.000
19.Mar.17	0	0.000	0.000	0.000	0.000	0.000	0.000	0.000	0.000	0.000	0.000
20.Mar.17	0	0.000	0.000	0.000	0.000	0.000	0.000	0.000	0.000	0.000	0.000
21.Mar.17	0	0.000	0.000	0.000	0.000	0.000	0.000	0.000	0.000	0.000	0.000
22.Mar.17	0	0.000	0.000	0.000	0.000	0.000	0.000	0.000	0.000	0.000	0.000
23.Mar.17	0	0.000	0.000	0.000	0.000	0.000	0.000	0.000	0.000	0.000	0.000
24.Mar.17	0	0.000	0.000	0.000	0.000	0.000	0.000	0.000	0.000	0.000	0.000
25.Mar.17	2	0.001	0.000	0.0001	0.000	0.001	0.000	0.000	0.000	0.000	0.000
26.Mar.17	0	0.000	0.000	0.000	0.000	0.000	0.000	0.000	0.000	0.000	0.000
27.Mar.17	0	0.000	0.000	0.000	0.000	0.000	0.000	0.018	0.000	0.000	0.000
28.Mar.17	0	0.000	0.000	0.000	0.000	0.000	0.000	0.000	0.000	0.000	0.000
29.Mar.17	0	0.000	0.000	0.000	0.000	0.000	0.000	0.000	0.000	0.000	0.000
30.Mar.17	0	0.000	0.000	0.000	0.000	0.000	0.000	0.000	0.000	0.000	0.000
31.Mar.17	0	0.000	0.000	0.000	0.000	0.000	0.000	0.000	0.000	0.000	0.000
TOTAL	2	0.001	0.000	0.000	0.000	0.001	0.000	0.018	0.019	0.000	0.000

ALL FIGURES IN MUS

Date	Shedding due to Transmission/Grid Constraints in Central Sector Stations / TTC / ATC VOILATION				DUE TO NEW GRID CODE REGULATION DEVIATION			Shedding due to Transmission/Grid Constraints in Central sector stations				Total	Total shedding due to grid restrictions
	BSES		NDPL	NDMC	BSES		TPDDL	BSES		TPDDL	NDMC		
	BYPL	BRPL			BYPL	BRPL		BYPL	BRPL				
	13	14	15	16	17	18	19	20	21	22	23	24=8 to 23	25=7+24
01.Mar.17	0.000	0.000	0.000	0.000	0.000	0.000	0.000	0.000	0.000	0.000	0.000	0.000	0.000
02.Mar.17	0.000	0.000	0.000	0.000	0.000	0.000	0.000	0.000	0.000	0.000	0.000	0.000	0.000
03.Mar.17	0.000	0.000	0.000	0.000	0.000	0.000	0.000	0.000	0.000	0.000	0.000	0.000	0.000
04.Mar.17	0.000	0.000	0.000	0.000	0.000	0.000	0.000	0.000	0.000	0.000	0.000	0.000	0.000
05.Mar.17	0.000	0.000	0.000	0.000	0.000	0.000	0.000	0.000	0.000	0.000	0.000	0.000	0.000
06.Mar.17	0.000	0.000	0.000	0.000	0.000	0.000	0.000	0.000	0.000	0.000	0.000	0.000	0.000
07.Mar.17	0.000	0.000	0.000	0.000	0.000	0.000	0.000	0.000	0.000	0.000	0.000	0.000	0.000
08.Mar.17	0.000	0.000	0.000	0.000	0.000	0.000	0.000	0.000	0.000	0.000	0.000	0.019	0.019
09.Mar.17	0.000	0.000	0.000	0.000	0.000	0.000	0.000	0.000	0.000	0.000	0.000	0.000	0.000
10.Mar.17	0.000	0.000	0.000	0.000	0.000	0.000	0.000	0.000	0.000	0.000	0.000	0.000	0.000
11.Mar.17	0.000	0.000	0.000	0.000	0.000	0.000	0.000	0.000	0.000	0.000	0.000	0.000	0.000
12.Mar.17	0.000	0.000	0.000	0.000	0.000	0.000	0.000	0.000	0.000	0.000	0.000	0.000	0.000
13.Mar.17	0.000	0.000	0.000	0.000	0.000	0.000	0.000	0.000	0.000	0.000	0.000	0.000	0.000
14.Mar.17	0.000	0.000	0.000	0.000	0.000	0.000	0.000	0.000	0.000	0.000	0.000	0.000	0.000
15.Mar.17	0.000	0.000	0.000	0.000	0.000	0.000	0.000	0.000	0.000	0.000	0.000	0.000	0.000
16.Mar.17	0.000	0.000	0.000	0.000	0.000	0.000	0.000	0.000	0.000	0.000	0.000	0.000	0.000
17.Mar.17	0.000	0.000	0.000	0.000	0.000	0.000	0.000	0.000	0.000	0.000	0.000	0.000	0.000
18.Mar.17	0.000	0.000	0.000	0.000	0.000	0.000	0.000	0.000	0.000	0.000	0.000	0.000	0.000
19.Mar.17	0.000	0.000	0.000	0.000	0.000	0.000	0.000	0.000	0.000	0.000	0.000	0.000	0.000
20.Mar.17	0.000	0.000	0.000	0.000	0.000	0.000	0.000	0.000	0.000	0.000	0.000	0.000	0.000
21.Mar.17	0.000	0.000	0.000	0.000	0.000	0.000	0.000	0.000	0.000	0.000	0.000	0.000	0.000
22.Mar.17	0.000	0.000	0.000	0.000	0.000	0.000	0.000	0.000	0.000	0.000	0.000	0.000	0.000
23.Mar.17	0.000	0.000	0.000	0.000	0.000	0.000	0.000	0.000	0.000	0.000	0.000	0.000	0.000
24.Mar.17	0.000	0.000	0.000	0.000	0.000	0.000	0.000	0.000	0.000	0.000	0.000	0.000	0.000
25.Mar.17	0.000	0.000	0.000	0.000	0.000	0.000	0.000	0.000	0.000	0.000	0.000	0.000	0.001
26.Mar.17	0.000	0.000	0.000	0.000	0.000	0.000	0.000	0.000	0.000	0.000	0.000	0.000	0.000
27.Mar.17	0.000	0.000	0.000	0.000	0.000	0.000	0.000	0.000	0.000	0.000	0.000	0.018	0.018
28.Mar.17	0.000	0.000	0.000	0.000	0.000	0.000	0.000	0.000	0.000	0.000	0.000	0.000	0.000
29.Mar.17	0.000	0.000	0.000	0.000	0.000	0.000	0.000	0.000	0.000	0.000	0.000	0.000	0.000
30.Mar.17	0.000	0.000	0.000	0.000	0.000	0.000	0.000	0.000	0.000	0.000	0.000	0.000	0.000
31.Mar.17	0.000	0.000	0.000	0.000	0.000	0.000	0.000	0.000	0.000	0.000	0.000	0.000	0.000
TOTAL	0.000	0.000	0.000	0.000	0.000	0.000	0.000	0.000	0.000	0.000	0.000	0.037	0.038

Date	DUE TO T&D CONSTRAINTS IN DELHI SYSTEM								
	DTL					DISCOMS			
	BSES		NDPL	NDMC	MES	BSES		NDPL	NDMC
	BYPL	BRPL				BYPL	BRPL		
26	27	28	29	30	31	32	33	34	
01.Mar.17	0.000	0.000	0.000	0.000	0.000	0.000	0.001	0.000	0.000
02.Mar.17	0.000	0.000	0.000	0.000	0.000	0.010	0.000	0.001	0.000
03.Mar.17	0.000	0.004	0.003	0.000	0.000	0.000	0.007	0.000	0.000
04.Mar.17	0.000	0.000	0.000	0.000	0.000	0.000	0.033	0.004	0.000
05.Mar.17	0.000	0.000	0.000	0.000	0.000	0.000	0.000	0.000	0.000
06.Mar.17	0.000	0.000	0.007	0.000	0.000	0.000	0.000	0.003	0.000
07.Mar.17	0.003	0.000	0.000	0.000	0.000	0.001	0.004	0.004	0.000
08.Mar.17	0.000	0.002	0.000	0.000	0.000	0.012	0.000	0.000	0.000
09.Mar.17	0.000	0.006	0.000	0.000	0.000	0.000	0.000	0.000	0.000
10.Mar.17	0.000	0.000	0.003	0.000	0.000	0.004	0.002	0.001	0.000
11.Mar.17	0.000	0.000	0.000	0.000	0.000	0.000	0.000	0.001	0.000
12.Mar.17	0.000	0.011	0.000	0.000	0.000	0.000	0.003	0.001	0.000
13.Mar.17	0.000	0.000	0.001	0.000	0.000	0.000	0.001	0.000	0.000
14.Mar.17	0.000	0.000	0.000	0.000	0.000	0.000	0.000	0.000	0.000
15.Mar.17	0.000	0.000	0.000	0.000	0.000	0.000	0.000	0.000	0.000
16.Mar.17	0.000	0.000	0.000	0.000	0.000	0.000	0.004	0.000	0.000
17.Mar.17	0.000	0.000	0.000	0.000	0.000	0.000	0.014	0.000	0.000
18.Mar.17	0.000	0.000	0.000	0.000	0.000	0.000	0.000	0.0001	0.000
19.Mar.17	0.000	0.000	0.018	0.000	0.000	0.000	0.000	0.000	0.000
20.Mar.17	0.000	0.000	0.000	0.000	0.000	0.000	0.001	0.002	0.000
21.Mar.17	0.000	0.000	0.068	0.000	0.000	0.000	0.000	0.000	0.000
22.Mar.17	0.000	0.000	0.000	0.000	0.000	0.000	0.012	0.000	0.000
23.Mar.17	0.000	0.000	0.001	0.000	0.000	0.000	0.032	0.001	0.000
24.Mar.17	0.000	0.000	0.000	0.000	0.000	0.000	0.009	0.003	0.000
25.Mar.17	0.000	0.000	0.000	0.000	0.000	0.000	0.012	0.000	0.000
26.Mar.17	0.006	0.000	0.004	0.000	0.000	0.000	0.000	0.000	0.000
27.Mar.17	0.010	0.000	0.000	0.001	0.000	0.000	0.000	0.000	0.000
28.Mar.17	0.001	0.002	0.000	0.000	0.000	0.061	0.027	0.001	0.000
29.Mar.17	0.000	0.000	0.000	0.000	0.000	0.000	0.035	0.000	0.000
30.Mar.17	0.000	0.173	0.003	0.000	0.000	0.002	0.108	0.000	0.000
31.Mar.17	0.000	0.000	0.000	0.000	0.000	0.000	0.000	0.102	0.000
TOTAL	0.020	0.198	0.108	0.001	0.000	0.090	0.305	0.124	0.000

DATE	OTHER AGENCIES LIKE GENCO, BBMB, BTPS ETC.				THEFT PRONE SHEDDING			TOTAL SHEDDING DUE TO T&D CONSTS. & THEFT PRONE	GRAND TOTAL
	BSES		NDPL	NDMC	BSES		NDPL		
	BYPL	BRPL			BYPL	BRPL			
1	35	36	37	38	39	40	41	42= 26 to 41	43 = 25 + 42
01.Mar.17	0.000	0.000	0.000	0.000	0.000	0.000	0.000	0.001	0.001
02.Mar.17	0.000	0.000	0.000	0.000	0.000	0.000	0.000	0.011	0.011
03.Mar.17	0.000	0.000	0.000	0.000	0.000	0.000	0.000	0.014	0.014
04.Mar.17	0.000	0.000	0.000	0.000	0.000	0.000	0.000	0.037	0.037
05.Mar.17	0.000	0.000	0.000	0.000	0.000	0.000	0.000	0.000	0.000
06.Mar.17	0.000	0.000	0.000	0.000	0.000	0.000	0.000	0.010	0.010
07.Mar.17	0.000	0.000	0.000	0.000	0.000	0.000	0.000	0.012	0.012
08.Mar.17	0.000	0.000	0.000	0.000	0.000	0.000	0.003	0.017	0.036
09.Mar.17	0.000	0.000	0.000	0.000	0.000	0.000	0.000	0.006	0.006
10.Mar.17	0.000	0.000	0.000	0.000	0.000	0.000	0.000	0.010	0.010
11.Mar.17	0.000	0.000	0.001	0.000	0.000	0.000	0.000	0.002	0.002
12.Mar.17	0.000	0.000	0.000	0.000	0.000	0.000	0.000	0.015	0.015
13.Mar.17	0.000	0.000	0.000	0.000	0.000	0.000	0.000	0.002	0.002
14.Mar.17	0.000	0.000	0.000	0.000	0.000	0.000	0.000	0.000	0.000
15.Mar.17	0.000	0.000	0.000	0.000	0.000	0.000	0.000	0.000	0.000
16.Mar.17	0.000	0.000	0.000	0.000	0.000	0.000	0.000	0.004	0.0040
17.Mar.17	0.000	0.000	0.000	0.000	0.000	0.000	0.000	0.014	0.014
18.Mar.17	0.000	0.000	0.000	0.000	0.000	0.000	0.000	0.000	0.000
19.Mar.17	0.000	0.000	0.000	0.000	0.000	0.000	0.000	0.018	0.018
20.Mar.17	0.008	0.078	0.000	0.000	0.000	0.000	0.000	0.089	0.089
21.Mar.17	0.000	0.000	0.000	0.000	0.000	0.000	0.000	0.068	0.068
22.Mar.17	0.000	0.000	0.000	0.000	0.000	0.000	0.000	0.012	0.012
23.Mar.17	0.000	0.000	0.000	0.000	0.000	0.000	0.000	0.034	0.034
24.Mar.17	0.000	0.000	0.000	0.000	0.000	0.000	0.000	0.012	0.012
25.Mar.17	0.000	0.000	0.000	0.000	0.000	0.000	0.000	0.012	0.013
26.Mar.17	0.000	0.000	0.000	0.000	0.000	0.000	0.000	0.010	0.010
27.Mar.17	0.000	0.000	0.000	0.000	0.000	0.000	0.000	0.011	0.029
28.Mar.17	0.000	0.000	0.000	0.000	0.000	0.000	0.006	0.098	0.098
29.Mar.17	0.000	0.000	0.000	0.000	0.000	0.000	0.000	0.035	0.035
30.Mar.17	0.000	0.000	0.000	0.000	0.000	0.000	0.000	0.286	0.286
31.Mar.17	0.000	0.000	0.000	0.000	0.000	0.000	0.000	0.102	0.102
TOTAL	0.008	0.078	0.001	0.000	0.000	0.000	0.009	0.942	0.980

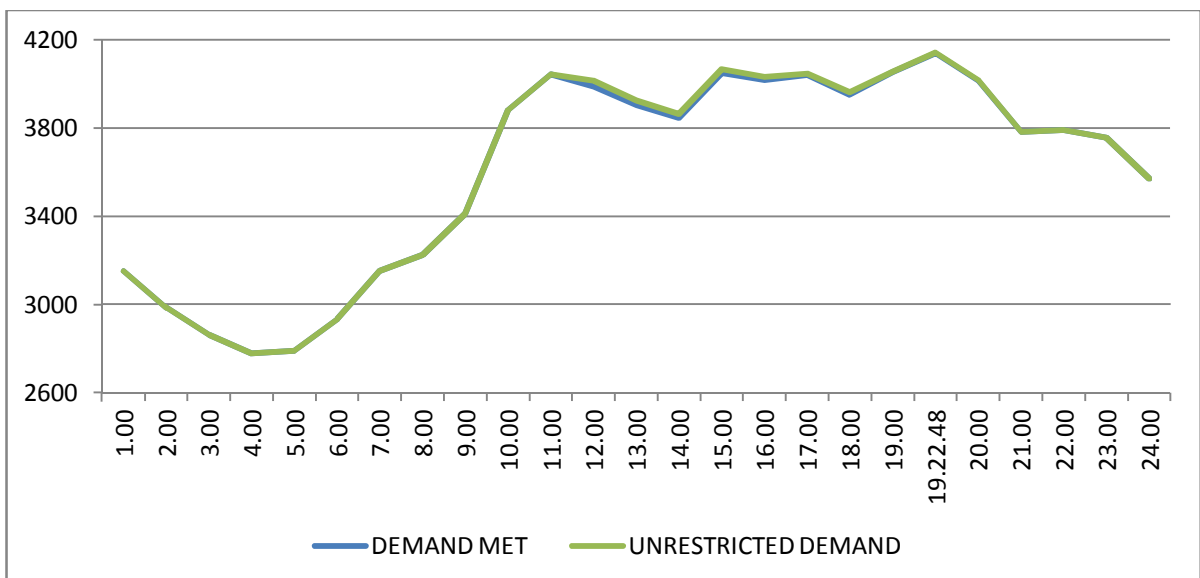
DATE	(NET CONS.)	MAXI. DEMAND MET DURING THE DAY	TIME OF OCCURRENCE OF MAX DEMAND	SHEDDING AT THIS TIME	UN-RESTRICTED DEMAND	MAXIMUM UN-RESTRICTED DEMAND DURING THE DAY	TIME OF MAX. UN-REST. DEMAND	DEMAND AT THAT TIME	SHEDDING AT THAT TIME
	In Mus.	IN MW	IN HRS.	IN MW	IN MW	IN MW	HRS.	IN MW	IN MW
1	32	33	34	35	36=33+35	37=39+40	38	39	40
01.Mar.17	61.970	3365	10:17:19	0	3365	3365	10:17:19	3365	0
02.Mar.17	61.737	3391	10:21:05	0	3391	3391	10:21:05	3391	0
03.Mar.17	62.252	3474	10:06:32	0	3474	3474	10:06:32	3474	0
04.Mar.17	59.149	3236	09:59:53	0	3236	3236	09:59:53	3236	0
05.Mar.17	57.521	3204	10:36:17	0	3204	3204	10:36:17	3204	0
06.Mar.17	60.368	3336	10:16:19	0	3336	3336	10:16:19	3336	0
07.Mar.17	60.795	3473	11:16:57	0	3473	3473	11:16:57	3473	0
08.Mar.17	61.914	3424	10:03:06	0	3424	3424	10:03:06	3424	0
09.Mar.17	62.003	3399	10:21:58	0	3399	3399	10:21:58	3399	0
10.Mar.17	61.813	3486	10:31:25	0	3486	3486	10:31:25	3486	0
11.Mar.17	59.334	3324	09:51:30	0	3324	3324	09:51:30	3324	0
12.Mar.17	51.363	3011	10:00	0	3011	3011	10:00	3011	0
13.Mar.17	42.121	2380	13:44:43	0	2380	2380	13:44:43	2380	0
14.Mar.17	50.068	3050	09:50:50	0	3050	3050	09:50:50	3050	0
15.Mar.17	57.664	3329	09:45:10	0	3329	3329	09:45:10	3329	0
16.Mar.17	58.109	3328	10:02	7	3335	3335	10:02	3328	7
17.Mar.17	60.253	3483	10:25:41	0	3483	3483	10:25:41	3483	0
18.Mar.17	57.730	3226	10:00:53	0	3226	3226	10:00:53	3226	0
19.Mar.17	55.816	3134	10:37:32	0	3134	3134	10:37:32	3134	0
20.Mar.17	61.185	3260	11:30	0	3260	3416	10:30	3194	222
21.Mar.17	63.881	3337	10:26:57	0	3337	3337	10:26:57	3337	0
22.Mar.17	65.969	3466	10:40:16	0	3466	3466	10:40:16	3466	0
23.Mar.17	67.663	3669	19:06:39	0	3669	3669	19:06:39	3669	0
24.Mar.17	71.970	3666	10:45:58	0	3666	3666	10:45:58	3666	0
25.Mar.17	67.009	3462	18:52:39	0	3462	3462	18:52:39	3462	0
26.Mar.17	65.211	3224	19:38:38	0	3224	3224	19:38:38	3224	0
27.Mar.17	72.947	3722	19:15	0	3722	3722	19:15	3722	0
28.Mar.17	78.542	3787	19:30	0	3787	3787	19:30	3787	0
29.Mar.17	80.463	3967	19:13:51	0	3967	3967	19:13:51	3967	0
30.Mar.17	83.708	4116	19:18:01	0	4116	4116	19:18:01	4116	0
31.Mar.17	87.421	4139	19:22:48	2	4141	4141	19:22:48	4139	2
TOTAL	1967.949	4139	19:22:48	2	4141	4141	19:22:48	4139	2
		31.03.17			31.03.17				

10

LOAD PATTERN OF DELHI ON THE DAY OF PEAK DEMAND MET DURING MARCH 2017 ON 31.03.2017- 4139MW AT 19.22.48HRS.

All figures in MW

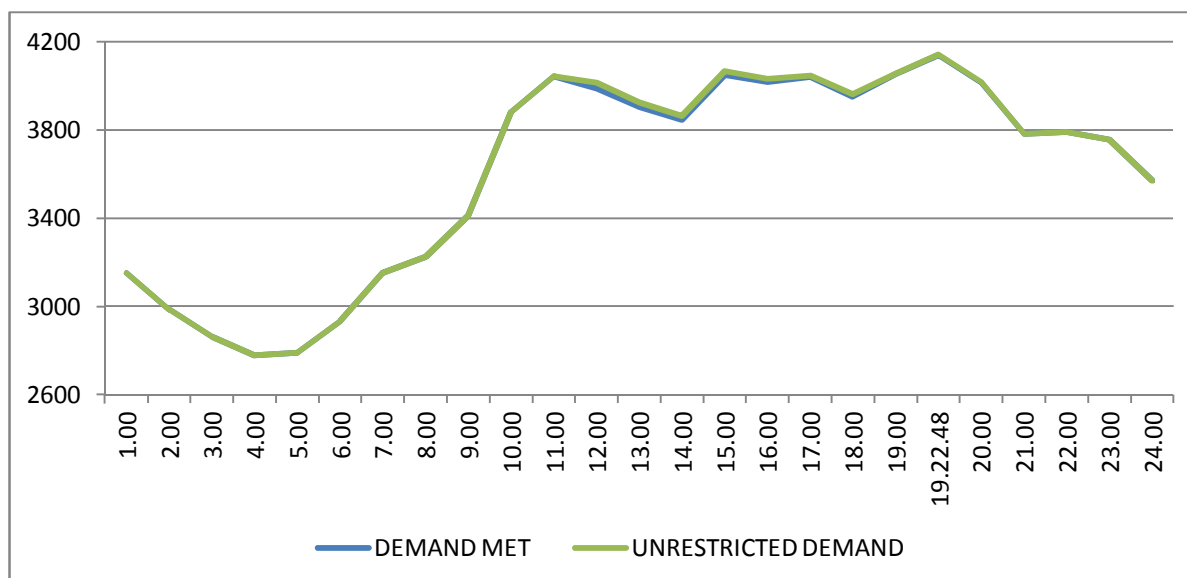
Hrs.	Demand	Load Shedding	Un-Restricted Demand
1.00	3153	0	3153
2.00	2987	0	2987
3.00	2863	0	2863
4.00	2780	0	2780
5.00	2790	0	2790
6.00	2932	0	2932
7.00	3152	0	3152
8.00	3226	0	3226
9.00	3410	0	3410
10.00	3880	0	3880
11.00	4042	0	4042
12.00	3988	26	4014
13.00	3905	19	3924
14.00	3845	19	3864
15.00	4048	19	4067
16.00	4018	14	4032
17.00	4039	8	4047
18.00	3951	11	3962
19.00	4051	2	4053
19.22.48	4139	2	4141
20.00	4015	2	4017
21.00	3782	0	3782
22.00	3792	0	3792
23.00	3756	0	3756
24.00	3570	0	3570
Total (IN MUS)	87.421	0.102	87.523



11 LOAD PATTERN OF DELHI ON THE DAY OF MAXIMUM UN-RESTRICTED DEMAND DURING MARCH 2017 ON 31.03.2017-4141MW AT 19.22.48HRS.

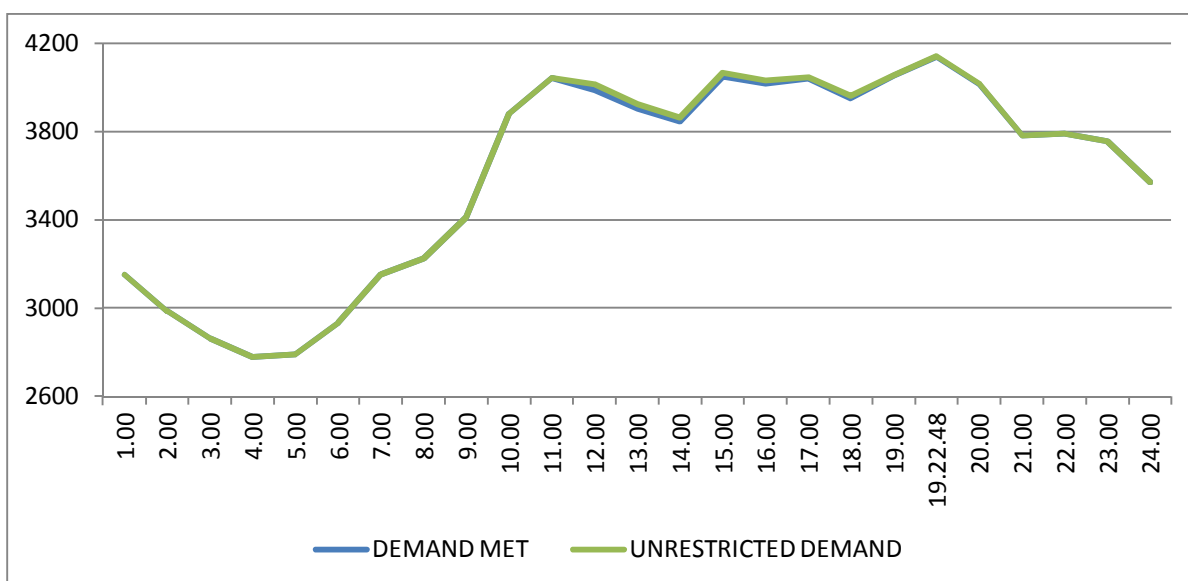
All figures in MW

Hrs.	Demand	Load Shedding	Un-Restricted Demand
1.00	3153	0	3153
2.00	2987	0	2987
3.00	2863	0	2863
4.00	2780	0	2780
5.00	2790	0	2790
6.00	2932	0	2932
7.00	3152	0	3152
8.00	3226	0	3226
9.00	3410	0	3410
10.00	3880	0	3880
11.00	4042	0	4042
12.00	3988	26	4014
13.00	3905	19	3924
14.00	3845	19	3864
15.00	4048	19	4067
16.00	4018	14	4032
17.00	4039	8	4047
18.00	3951	11	3962
19.00	4051	2	4053
19.22.48	4139	2	4141
20.00	4015	2	4017
21.00	3782	0	3782
22.00	3792	0	3792
23.00	3756	0	3756
24.00	3570	0	3570
Total (IN MUS)	87.421	0.102	87.523



12 LOAD PATTERN OF DELHI ON THE DAY OF MAXIMUM ENERGY CONSUMED DURING MARCH 2017 – 31.03.2017 – 87.421Mus All figures in MW

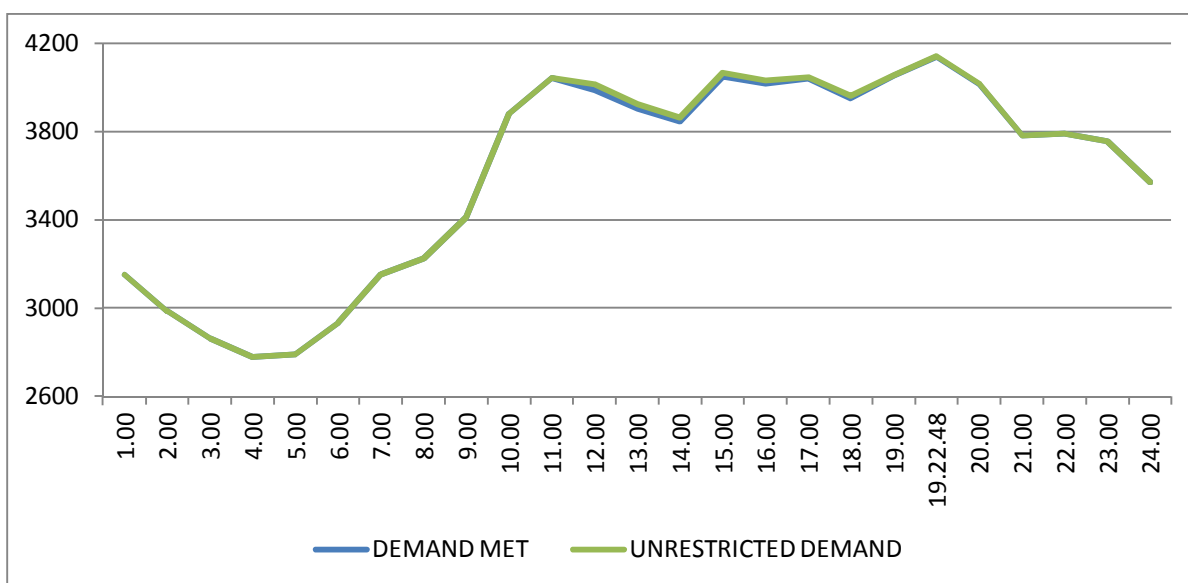
Hrs.	Demand	Load Shedding	Un-Restricted Demand
1.00	3153	0	3153
2.00	2987	0	2987
3.00	2863	0	2863
4.00	2780	0	2780
5.00	2790	0	2790
6.00	2932	0	2932
7.00	3152	0	3152
8.00	3226	0	3226
9.00	3410	0	3410
10.00	3880	0	3880
11.00	4042	0	4042
12.00	3988	26	4014
13.00	3905	19	3924
14.00	3845	19	3864
15.00	4048	19	4067
16.00	4018	14	4032
17.00	4039	8	4047
18.00	3951	11	3962
19.00	4051	2	4053
19.22.48	4139	2	4141
20.00	4015	2	4017
21.00	3782	0	3782
22.00	3792	0	3792
23.00	3756	0	3756
24.00	3570	0	3570
Total (IN MUS)	87.421	0.102	87.523



13 LOAD PATTERN OF DELHI ON THE DAY OF MAXIMUM UNRESTRICTED ENERGY DEMAND DURING MARCH 2017 – 31.03.2017 – 87.523 Mus

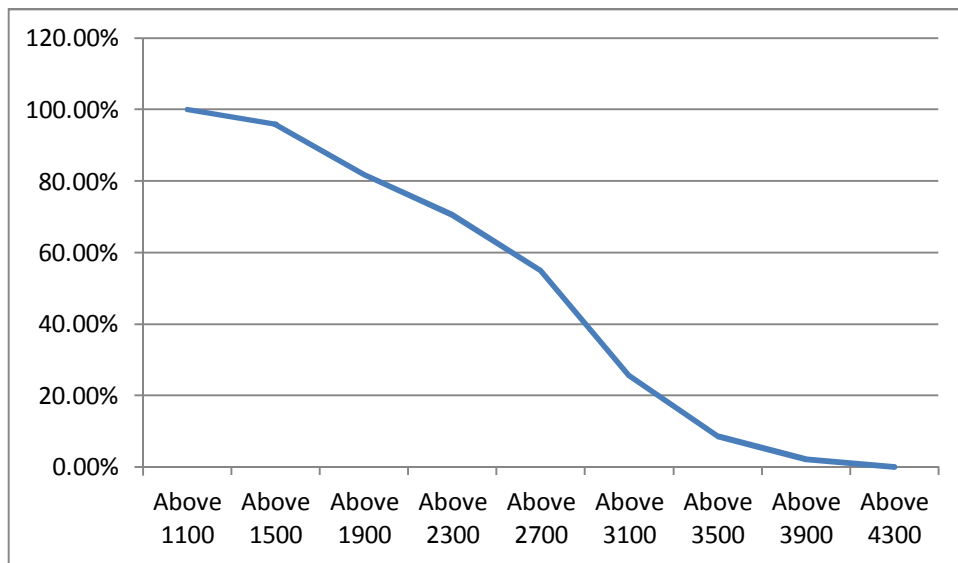
All figures in MW

Hrs.	Demand	Load Shedding	Un-Restricted Demand
1.00	3153	0	3153
2.00	2987	0	2987
3.00	2863	0	2863
4.00	2780	0	2780
5.00	2790	0	2790
6.00	2932	0	2932
7.00	3152	0	3152
8.00	3226	0	3226
9.00	3410	0	3410
10.00	3880	0	3880
11.00	4042	0	4042
12.00	3988	26	4014
13.00	3905	19	3924
14.00	3845	19	3864
15.00	4048	19	4067
16.00	4018	14	4032
17.00	4039	8	4047
18.00	3951	11	3962
19.00	4051	2	4053
19.22.48	4139	2	4141
20.00	4015	2	4017
21.00	3782	0	3782
22.00	3792	0	3792
23.00	3756	0	3756
24.00	3570	0	3570
Total (IN MUS)	87.421	0.102	87.523



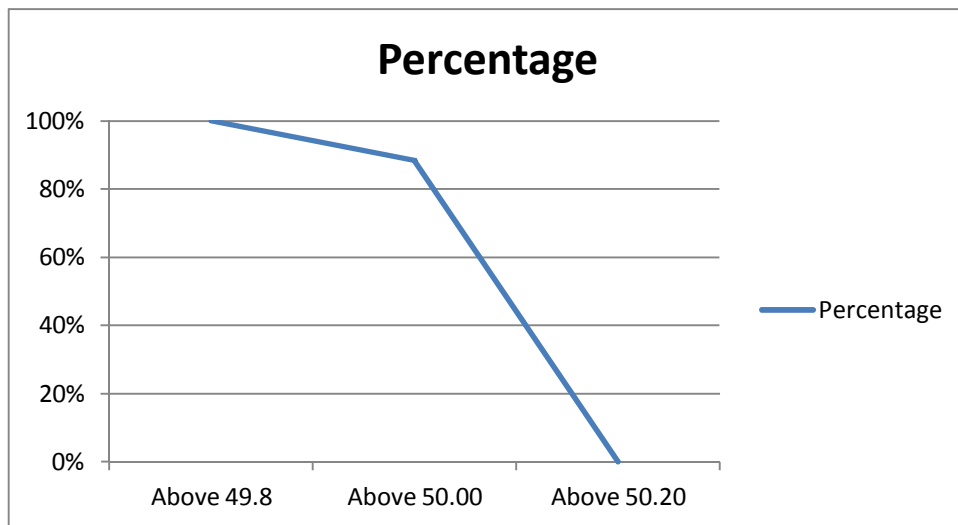
14 **LOAD DURATION CURVE FOR MARCH 2017**

Load in MW	Percentage of Time
Above 1100	100.00%
Above 1500	95.83%
Above 1900	81.89%
Above 2300	70.56%
Above 2700	54.91%
Above 3100	25.57%
Above 3500	8.53%
Above 3900	2.18%
Above 4300	0.00%



FREQUENCY ANALYSIS FOR THE MONTH OF MARCH 2017

Frequency Range in Hz.	Percentage of time
Above 49.8	100%
Above 50.00	84.34%
Above 50.20	100%



16 VOLTAGE PROFILE OF 220 KV SUB-STATIONS IN DELHI DURING MARCH 2017

All figures in kV

Date	NARELA		GAZIPUR	
	Max	Min	Max	Min
01.Mar.17	240.91	221.56	231.88	197.70
02.Mar.17	239.45	221.18	233.04	200.93
03.Mar.17	238.85	218.47	205.70	205.70
04.Mar.17	237.81	219.11	205.96	--
05.Mar.17	237.69	221.82	234.59	--
06.Mar.17	239.75	222.21	231.49	--
07.Mar.17	237.17	221.56	--	--
08.Mar.17	237.81	223.11	--	--
09.Mar.17	240.91	225.05	238.20	--
10.Mar.17	238.46	226.34	239.88	--
11.Mar.17	240.78	224.92	240.26	22298
12.Mar.17	238.33	227.37	238.33	226.72
13.Mar.17	232.01	212.01	238.46	225.56
14.Mar.17	237.94	226.21	238.46	--
15.Mar.17	240.52	222.98	238.46	221.05
16.Mar.17	238.46	220.53	235.88	216.41
17.Mar.17	237.04	223.37	238.59	216.92
18.Mar.17	237.30	219.50	237.04	219.24
19.Mar.17	236.91	228.92	228.66	228.66
20.Mar.17	230.85	215.63	234.59	221.18
21.Mar.17	228.92	218.98	237.17	219.24
22.Mar.17	231.24	216.41	236.91	219.11
23.Mar.17	232.66	217.57	234.46	215.63
24.Mar.17	232.66	216.92	234.59	214.60
25.Mar.17	233.95	218.60	235.23	214.08
26.Mar.17	233.17	221.18	236.27	224.01
27.Mar.17	234.33	218.34	238.97	--
28.Mar.17	232.14	216.28	235.75	--
29.Mar.17	232.40	217.18	234.98	220.53
30.Mar.17	233.30	219.11	235.36	213.31
31.Mar.17	234.33	219.50	226.98	213.70

17 VOLTAGE PROFILE OF 400 KV SUB-STATIONS IN DELHI DURING MARCH 2017

All figures in kV

Date	400kV Bamnauli Grid Sub-Station				
	Max KV	Max Time	Min KV	Min Time	Average KV
01.Mar.17	421.37	03.46	395.58	10.15	408.06
02.Mar.17	422.55	03.00	396.05	09.16	408.68
03.Mar.17	422.55	03.59	392.76	11.19	407.55
04.Mar.17	419.73	03.01	390.89	10.17	405.93
05.Mar.17	418.56	16.01	397.45	10.14	409.28
06.Mar.17	420.90	03.59	392.76	09.21	407.80
07.Mar.17	419.26	03.59	394.88	09.42	408.06
08.Mar.17	419.73	01.45	395.58	14.29	407.84
09.Mar.17	423.95	03.58	399.80	07.37	410.79
10.Mar.17	424.42	03.04	401.91	12.21	413.48
11.Mar.17	425.12	01.58	402.14	09.19	412.69
12.Mar.17	420.43	16.02	404.02	08.45	415.52
13.Mar.17	415.04	00.21	415.04	00.21	415.04
14.Mar.17	425.59	03.41	400.27	08.49	412.60
15.Mar.17	424.89	03.56	401.44	09.09	411.89
16.Mar.17	422.55	03.59	395.11	12.21	408.41
17.Mar.17	421.84	03.57	394.64	10.42	408.29
18.Mar.17	420.67	03.59	394.64	10.42	407.61
19.Mar.17	420.20	01.10	400.74	12.16	411.82
20.Mar.17	421.37	03.33	396.75	12.16	408.90
21.Mar.17	419.26	03.02	395.58	10.38	406.46
22.Mar.17	419.03	03.36	396.05	10.15	406.51
23.Mar.17	415.04	03.29	390.19	12.39	404.79
24.Mar.17	415.51	03.01	391.59	11.18	404.13
25.Mar.17	419.03	03.21	394.81	11.08	405.81
26.Mar.17	416.68	03.39	399.57	19.15	410.09
27.Mar.17	419.26	03.00	394.88	09.39	406.13
28.Mar.17	416.92	03.47	393.70	09.43	404.67
29.Mar.17	415.51	02.17	394.41	12.17	405.03
30.Mar.17	416.92	02.20	394.88	19.21	407.48
31.Mar.17	420.20	03.15	395.58	19.15	406.91

Date	400kV Bawana Grid Sub-Station				
	Max KV	Max Time	Min KV	Min Time	Average KV
01.Mar.17	429.11	04.02	403.08	12.08	414.88
02.Mar.17	427.23	02.59	402.85	09.15	414.14
03.Mar.17	425.36	04.00	397.92	11.19	412.15
04.Mar.17	423.72	03.59	396.28	10.18	411.18
05.Mar.17	424.42	16.01	404.02	10.14	414.86
06.Mar.17	426.30	04.00	399.57	03.22	413.47
07.Mar.17	425.12	20.58	401.91	10.07	416.98
08.Mar.17	426.77	23.59	406.83	06.27	415.92
09.Mar.17	430.75	02.02	409.88	12.13	418.54
10.Mar.17	430.28	03.04	409.18	06.54	420.03
11.Mar.17	431.92	01.36	410.35	12.17	419.99
12.Mar.17	427.70	23.56	413.17	19.10	422.96
13.Mar.17	430.99	03.57	413.63	19.21	423.68
14.Mar.17	431.22	03.23	410.12	06.21	419.08
15.Mar.17	429.11	03.56	409.88	06.27	418.29
16.Mar.17	426.77	02.02	402.61	12.17	414.99
17.Mar.17	426.53	03.57	402.14	10.43	414.70
18.Mar.17	426.53	02.31	402.61	10.41	413.96
19.Mar.17	426.06	01.12	405.66	12.16	417.44
20.Mar.17	427.47	03.32	401.91	11.57	415.12
21.Mar.17	424.89	03.03	403.08	14.14	413.43
22.Mar.17	424.19	03.35	403.32	10.15	413.86
23.Mar.17	421.61	01.01	397.92	12.38	411.14
24.Mar.17	420.67	03.01	398.16	11.21	410.45
25.Mar.17	424.42	03.21	404.02	12.19	412.37
26.Mar.17	422.78	03.35	406.13	19.15	415.41
27.Mar.17	424.19	03.51	401.44	12.38	412.11
28.Mar.17	421.61	03.48	401.91	10.35	411.18
29.Mar.17	420.67	02.17	400.50	12.18	411.39
30.Mar.17	423.25	02.57	403.32	19.37	413.83
31.Mar.17	426.06	03.15	402.61	19.19	413.29

18 DETAILS OF LUMPED CAPACITORS AT NEAREST 220 KV SUBSTATION

Sl. No	SUB-STATION	INSTALLED CAPACITY			
		66KV	33kV	11kV	TOTAL
1	IP YARD		30.00		30.00
1	Kamla Market			16.35	16.35
2	Minto Road				0.00
3	GB Pant Hosp			10.48	10.48
4	Delhi Gate			16.30	16.30
5	Tilakmarg			5.04	5.04
7	Cannaught Place			10.08	10.08
8	Kilokri		10.08	10.48	20.56
9	NDSE-II				0.00
11	Nizamuddin				0.00
12	Exhibition-I				0.00
13	Exhibition-II				0.00
14	Defence Colony				0.00
15	IG Stadium		10.08	5.45	15.53
16	Lajpat Nagar				0.00
17	IP Estate			10.90	10.90
		0.00	50.16	85.08	135.24
2	Electric Lane				
1	Electric Lane			5.04	5.04
2	Scindia House			10.44	10.44
3	Mandi House			10.80	10.80
4	Raisina Road			10.08	10.08
5	Raja Bazar			10.08	10.08
		0.00	0.00	46.44	46.44
3	RPH Station		20.00		20.00
1	Lahori Gate			10.49	10.49
2	Jama Masjid			10.48	10.48
4	Kamla Market				0.00
5	Minto Road			10.90	10.90
6	GB Pant Hosp				0.00
7	IG Stadium				0.00
		0.00	20.00	31.87	51.87
4	Parkstreet S/stn	20.00	20.00		40.00
1	Shastri Park		10.90	5.45	16.35
2	Faiz Road			18.05	18.05
3	Motia Khan			16.30	16.30
4	Prasad Nagar			16.25	16.25
5	Anand Parbat			10.80	10.80
6	Shankar Road			10.44	10.44
7	Rama Road			0.00	0.00
8	Baird Road			10.08	10.08
9	Hanuman Road			10.08	10.08
10	Pusa			5.44	5.44
11	Ridge Valley			0.00	0.00
12	B. D. Marg			5.40	5.40
13	Nirman Bhawan			5.04	5.04
		20.00	30.90	113.33	164.23
5	Naraina S/stn		20.00	5.04	25.04
1	DMS			10.85	10.85
2	Mayapuri		10.87	10.40	21.27
3	Inderpuri		13.26	5.04	18.30
4	Rewari line				0.00
5	Khyber Lane		10.05		10.05
6	Kirbi Place		10.05		10.05
7	Payal			10.08	10.08
8	A-21 Naraina			4.80	4.80
8	Saraswati Garden			10.08	10.08
		0.00	64.23	56.29	120.52

Sl. No	SUB-STATION	INSTALLED CAPACITY			
		66KV	33kV	11kV	TOTAL
6	Mehrauli S/stn	80.00		5.04	85.04
1	Adchini			14.61	14.61
2	Andheria Bagh			10.85	10.85
3	IIT			10.90	10.90
4	JNU		10.03	10.03	20.06
5	Bijwasan			15.47	15.47
6	DC Saket		10.08	9.98	20.06
7	Malviya Nagar				0.00
8	C Dot			10.48	10.48
9	Vasant kunj B-Blk	21.79		10.90	32.69
10	Vasant kunj C-Blk	20.16		10.48	30.64
11	Palam				0.00
12	IGNOU			5.04	5.04
13	R. K. Puram-I			10.07	10.07
14	Vasant Vihar			19.25	19.25
15	Pusp Vihar			10.44	10.44
16	Bhikaji Cama Place		10.08	10.07	20.15
		121.95	30.19	163.61	315.75
7	Vasantkunj S/stn	40.00		5.04	45.04
1	R. K. Puram-II			10.80	10.80
2	Vasant kunj C-Blk				0.00
3	Vasant kunj D-Blk			9.63	9.63
4	Ridge Valley				0.00
		40.00	0.00	25.47	65.47
8	Okhla S/stn	60.00	10.00	5.04	75.04
1	Balaji			10.80	10.80
2	East of Kailash			15.89	15.89
3	Alaknanda			16.30	16.30
4	Malviya Nagar	21.79	20.16	10.85	52.80
5	Masjid Moth			16.30	16.30
6	Nehru Place			21.34	21.34
7	Okhla Ph-I	21.79		16.30	38.09
8	Okhla Ph-II		20.93	15.47	36.40
9	Shivalik			10.80	10.80
10	Batra			15.90	15.90
11	VSNL			10.90	10.90
12	Siri Fort			10.49	10.49
13	Tuglakabad			10.85	10.85
		103.58	51.09	187.23	341.90
9	Lodhi Road S/stn			20.00	20.00
1	Defence Colony			14.85	14.85
2	Hudco			10.90	10.90
3	Lajpat Nagar			10.90	10.90
4	Nizamuddin			10.44	10.44
5	Vidyut Bhawan (Shahjahan Rd)			10.80	10.80
6	Ex. Gr. II			0.00	0.00
7	IHC			0.00	0.00
		0.00	0.00	77.89	77.89
10	Sarita Vihar S/stn	20.00		5.04	25.04
1	Sarita Vihar			10.07	10.07
2	MCIE			10.06	10.06
3	Mathura Road	20.16		11.69	31.85
4	Jamia Millia			10.89	10.89
5	Sarai Julena		10.08	16.29	26.37
6	Jasola			5.44	5.44
		40.16	10.08	69.48	119.72

Sl. No	SUB-STATION	INSTALLED CAPACITY			
		66KV	33kV	11kV	TOTAL
11	Wazirabad				
1	Bhagirathi		14.40	18.10	32.50
2	Ghonda	21.79	22.56	15.94	60.29
3	Seelam Pur		10.08	21.39	31.47
4	Dwarkapuri			15.46	15.46
5	Nandnagri	20.16		16.35	36.51
6	Yamuna Vihar			14.40	14.40
7	East of Loni Road			18.00	18.00
8	Shastri Park			10.90	10.90
9	Karawal Nagar			5.40	5.40
10	Sonia Vihar			14.70	14.70
		41.95	47.04	150.64	239.63
12	Geeta Colony				
1	Geeta Colony			10.49	10.49
2	Kanti Nagar			18.10	18.10
3	Kailash Nagar			15.48	15.48
4	Seelam Pur				0.00
5	Shakar Pur			10.80	10.80
		0.00	0.00	54.87	54.87
13	Gazipur S/stn	40.00		5.04	45.04
1	Dallupura	28.80		10.90	39.70
2	Vivek Vihar			9.57	9.57
3	GT Road			10.85	10.85
4	Kondli	20.16		10.85	31.01
5	MVR-I			10.90	10.90
6	MVR-II	20.16		10.44	30.60
7	PPG Ind. Area			10.06	10.06
		109.12	0.00	78.61	187.73
14	Patparganj S/stn	40.00	20.00	5.04	65.04
1	GH-I	19.89		10.45	30.34
2	GH-II	20.09		10.90	30.99
3	CBD		10.03	15.48	25.51
4	Guru Angad Nagar			15.49	15.49
5	Karkadooma		10.80	10.44	21.24
6	Preet Vihar			10.07	10.07
7	CBD-II			10.80	10.80
8	Shakarpur				0.00
9	Jhilmil			10.80	10.80
10	Dilshad Garden	20.16		16.35	36.51
11	Khichripur	21.79		15.89	37.68
12	Mother Dairy				0.00
13	Scope Building				0.00
14	Vivek Vihar				0.00
15	Akhardham			14.60	14.60
		121.93	40.83	146.31	309.07
15	Najafgarh S/stn	60.00		5.04	65.04
1	A4 Paschim Vihar			10.80	10.80
2	Nangloi	21.73		15.84	37.57
3	Nangloi W/W	20.89		10.85	31.74
4	Pankha Road			15.88	15.88
5	Jaffarpur			15.43	15.43
7	Inst. Area Janakpuri (Sagarpur)			17.60	17.60
8	Paschimpuri		10.05	15.47	25.52
9	Paschim Vihar	41.83		15.43	57.26
10	Mukherjee Park			20.83	20.83
11	Udyog Nagar			10.43	10.43
12	Choukhandi			10.07	10.07
13	DJB Najafgarh			21.60	21.60
		144.45	10.05	185.27	339.77

Sl. No	SUB-STATION	INSTALLED CAPACITY			
		66KV	33kV	11kV	TOTAL
16	Pappankalan-I S/stn	20.00		5.04	25.04
1	Bindapur Grid G-3 PPK	21.73		15.85	37.58
2	Bodella-I	20.10		16.24	36.34
3	Bodella-II	21.73		17.64	39.37
4	DC Janakpuri			10.03	10.03
5	G-2 PPK (Nasirpur)			10.80	10.80
6	G-5 PPK (Matiala)			15.51	15.51
7	G-6 PPK			5.40	5.40
8	G-15 PPK			10.80	10.80
9	Harinagar	21.18		16.25	37.43
10	Rewari line			5.44	5.44
		104.74	0.00	129.00	233.74
17	BBMB Rohtak Road				
1	S.B. Mill			10.07	10.07
2	Rama Road			10.88	10.88
3	Ram Pura			10.48	10.48
4	Rohtak Road			10.08	10.08
5	Vishal			10.40	10.40
6	Madipur			10.43	10.43
7	Sudershan Park			10.08	10.08
8	Kirti Nagar			5.44	5.44
		0.00	0.00	77.86	77.86
18	Shalimarbagh S/stn		40.00	6.00	46.00
1	S.G.T. Nagar			5.44	5.44
2	Ashok Vihar			0.00	0.00
3	Haiderpur			11.39	11.39
4	SMB FC			12.64	12.64
5	Rani Bagh			5.44	5.44
6	SMB KHOSLA			5.44	5.44
		0.00	40.00	46.35	86.35
19	Subzimandi S/stn			6.00	6.00
1	Shakti Nagar			5.04	5.04
2	Gulabibagh			10.88	10.88
3	Shahzadabagh			15.79	15.79
4	DU			5.44	5.44
5	Tripolia			10.88	10.88
6	B. G. Road			5.40	5.40
		0.00	0.00	59.43	59.43
20	Narela S/stn	40.00		5.04	45.04
1	A-7 Narela			10.88	10.88
2	Azad Pur			5.44	5.44
3	Badli	20.00		5.95	25.95
4	DSIDC Narela-1			5.95	5.95
5	GTK			5.94	5.94
6	Jahangirpuri	20.00	10.00	0.00	30.00
7	Bhalswa			12.64	12.64
8	Pitampura-I	20.00		5.04	25.04
9	RG-1			5.44	5.44
		100.00	10.00	62.32	172.32

Sl. No	SUB-STATION	INSTALLED CAPACITY			
		66KV	33kV	11kV	TOTAL
21	Gopalpur S/stn		30.00	5.04	35.04
1	Hudson Lane			5.95	5.95
2	Wazirabad			7.20	7.20
3	Indra Vihar			5.95	5.95
4	DIFR			5.44	5.44
5	GTK Road			5.44	5.44
6	Jahangirpuri		10.00	5.95	15.95
7	Civil lines			7.20	7.20
8	Pitam Pura-3			5.44	5.44
9	SGT Nagar			5.95	5.95
10	Tiggipur			10.88	10.88
11	Model Town			14.40	14.40
12	Azad Pur			5.44	5.44
		0.00	40.00	90.28	130.28
22	Rohini S/stn	40.00		6.00	46.00
1	Rohini Sec-22			18.08	18.08
2	Rohini Sec-24			5.44	5.44
3	Rohini-3			5.95	5.95
4	Rohini-4			11.39	11.39
5	Rohini-5			11.39	11.39
6	Rohini-6			0.00	0.00
7	Mangolpuri-2	20.00		7.20	27.20
8	Pitam Pura-1			5.44	5.44
9	Pitam Pura-2			10.48	10.48
10	Rohini DC-1			14.40	14.40
11	AIR Kham pur			11.90	11.90
		60.00	0.00	107.67	167.67
23	Kanjhawala S/stn	20.00		5.04	25.04
1	Bawana Clear Water			14.30	14.30
2	Pooth Khoord	20.00		5.44	25.44
4	Rohini -2			13.15	13.15
		40.00	0.00	37.93	77.93
24	BAWANA S/stn				
1	Bawana S/stn No. 6			10.88	10.88
2	Bawana S/stn No. 7			7.20	7.20
		0.00	0.00	18.08	18.08
25	Kashmeregate S/stn			5.04	5.04
1	Civil lines			7.20	7.20
2	Town Hall			8.64	8.64
3	Fountain			5.45	5.45
		0.00	0.00	26.33	26.33
26	Pappankalan-II				
1	DMRC				0.00
2	HASTAL			21.60	21.60
3	GGSH			10.80	10.80
		0.00	0.00	32.40	32.40
27	Trauma Center (AIIMS)				
1	AIIMS		13.26	5.04	18.30
2	Trauma Center			10.08	10.08
3	Netaji Nagar			15.12	15.12
4	Sanjay Camp			10.08	10.08
5	Kidwai Nagar			10.08	10.08
6	SJ Airport			5.04	5.04
7	Race Course			10.44	10.44
		0.00	13.26	65.88	79.14

Sl. No	SUB-STATION	INSTALLED CAPACITY			
		66KV	33kV	11kV	TOTAL
28	MUNDKA				
1	Mangolpuri-I			20.35	20.35
2	Rohini Sec-23	20.00		12.64	32.64
3	66kV Mundka			21.60	21.60
		20.00	0.00	54.59	74.59
29	DSIDC BAWANA				
1	DSIDC NRL-1	20.00			20.00
2	DSIDC NRL-2			16.32	16.32
3	Bawana Clear Water			7.30	7.30
4	Bawana-1			14.40	14.40
		20.00	0.00	38.02	58.02
30	RIDGE VALLEY				
1	Keventry Diary			10.08	10.08
2	Nehru Park			5.04	5.04
3	State Guest House			5.40	5.40
4	Bapu Dham			15.48	15.48
		0.00	0.00	36.00	36.00
31	IP EXTN (PRAGATI)				
1	Vidyut Bhawan			10.08	10.08
2	Dalhousie Road			5.04	5.04
3	National Archives			10.08	10.08
4	School Lane			10.44	10.44
		0.00	0.00	35.64	35.64
32	Wazirpur				
1	Tri Nagar			10.88	10.88
2	Wazirpur-1			17.18	17.18
3	Wazirpur-2			13.20	13.20
4	Ashok vihar			17.80	17.80
5	Azad Pur			5.44	5.44
6	GTK			4.80	4.80
		0.00	0.00	69.30	69.30
33	Peeragarhi				
1	Rani Bagh			5.44	5.44
2	Rani Bagh cc			9.60	9.60
		0.00	0.00	15.04	15.04
34	Rohini-II				
1	Rohini-6			13.15	13.15
		0.00	0.00	13.15	13.15

Utility	HT	LT	Total
BYPL	901.18	102.00	1003.18
BRPL	1264.49	242.00	1506.49
TPDDL	820.34	119.00	939.34
NDMC	253.74	24.00	277.74
DTL	753.52	0.00	753.52
IPGCL (RPH)	20.00	0.00	20.00
MES	20.10	0.00	20.10
TOTAL	4033.37	487.00	4520.37

20 DETAILS OF BREAK-DOWNS DURING THE MONTH OF MARCH 2017

SL NO	OCCURRENCE OF BREAK-DOWN		DETAILS OF THE BREAKDOWN	TIME OF RESTORATION		REMARKS
	DATE	TIME		DATE	TIME	
1	22.5.16	20:30	400kV Bamnauli-Jhatikara Ckt-I	contd.	contd .	AT BAMNAULI : AB PHASE, Z-I, Z-5, DT SENT, LBB, DIST 438.4METERS
2	4.9.16	06:35	PAPPANKALAN-I 220/66kV 100MVA Tx-III	05.04.17	17.56	TR. TRIPPED ON DIFFERENTIAL, 86A&B, 30A(BUCHHOLZ), 30D (BUCHHOLZ ALARM), 30H (SUDDEN PRESSURE), 30J (PRESSURE RELEASE TRIP), LEAKAGE IN R&Y PHASE HV BUSHING AND R&Y PHASE LV BUSHING. TR. DAMAGED. TR. REPLACED WITH 160MVA TR. AND CHARGED ON 03.04.2017 AT 23.46HRS. ON NO LOAD AND LOAD WAS TAKEN ON 05.04.2017 AT 17.56HRS.
3	11.9.16	20:43	PARKSTREET 220/33kV 100MVA Tx-II	30.03.17	19.29	TR. TRIPPED ON DIFFERENTIAL BUCHZ. RELAY. PUT OFF DUE TO RISE IN OIL TEMPERATURE & WAS DECLARED DAMAGED. TR. REPLACED WITH ANOTHER 100MVA TR. WHICH WAS SHIFTED FROM PAPANKALAN-I. IT WAS CHARGED ON 29.03.2017 AT 19.10HRS. ON NO LOAD AND LOAD WAS TAKEN ON 30.03.2017 AT 19.29HRS.
4	19.10.16	16:48	WAZIRPUR 220/33kV 100MVA Tx-I	contd.	contd .	TR. TRIPPED ON TROUBLE ALARM, DIFFERENTIAL RELAY, B PHASE, GROUP A, 86A, 86B, BUCHHOLZ.
5	1.12.16	08:38	GEETA COLONY 220/33kV 100MVA Tx-II	contd.	contd .	TR. TRIPPED ON BUCHOLZ RELAY.
6	11.12.16	08:37	BAWANA 400/220kV 315MVA ICT-I	28.03.17	21.35	ICT main CB 420-52 & Tie CB 421-52 tripped on O/C, E/F, Differential prot., R&Y Phase, OTI trip, WTI/PRV Trip, Bucholz. Alarm operated. 220kV I/C of ICT tripped on CB auto trip, 195AC, 195 BC, 195CC, 295AC, 295 BC, 295CC. ICT damaged and caught fire. It was replcaed with another 315MVA ICT from Mundka. It was charged on 24.03.2017 at 20.35hrs. and load was taken on 28.03.2017 at 21.35hrs.
7	1.3.17	11:19	220kV BAMNAULI - DIAL CKT-I	1.3.17	18:42	AT BAMNAULI CKT. TRIPPED ON DIST PROT, ZONE-I, DIST 29MTS.
8	3.3.17	18:33	220kV BAMNAULI-NARAINA CKT-I	3.3.17	19:00	AT BAMNAULI CKT. TRIPPED ON 186AB. AT NARAINA CKT. DID NOT TRIP.
9	3.3.17	18:33	220kV BAMNAULI-NARAINA CKT-II	3.3.17	19:00	AT BAMNAULI CKT. TRIPPED ON 186AB. AT NARAINA CKT. DID NOT TRIP.
10	3.3.17	18:33	220kV BAMNAULI-NAJAFGARH CKT-I	3.3.17	19:00	AT BAMNAULI CKT. TRIPPED ON 186AB. AT NAJAFGARH CKT. DID NOT TRIP.
11	4.3.17	11:31	220KV WAZIRABAD - MANDOLA CKT-II	4.3.17	12:34	AT WAZIRBAD CKT TRIPPED ON DIST PROT, ZONE-I, DIST 754.5M AT MANDOLA DIST RPOT, ZONE -II, DIST 12.87KM.
12	7.3.17	02:20	220kV GAZIPUR- PATPARGANJ CKT	29.3.17	17:10	AT GAZIPUR CKT. TRIPPED ON 86, DIST PROT, ZONE-I. CABLE DAMAGED.
13	7.3.17	23:00	GAZIPUR 66/11kV, 20MVA Tx-II	8.3.17	19:55	TR. TRIPPE DON DIFFERENTIAL.
14	8.3.17	14:10	MUNDKA 400/220kV 315MVA ICT-IV	8.3.17	16:23	ICT TRIPPED ON 86A&B, I/C TRIPPED ON E/F.

SL NO	OCCURRENCE OF BREAK-DOWN		DETAILS OF THE BREAKDOWN	TIME OF RESTORATION		REMARKS
	DATE	TIME		DATE	TIME	
15	8.3.17	14:10	MUNDKA 220/66kV 160MVA Tx-III	8.3.17	16:53	TR. TRIPPED ON E/F.
16	8.3.17	14:10	400kV Mundka-Jhatikara Ckt-II	8.3.17	15:15	AT MUNDKA CKT. TRIPPED ON 86A&B, DT RECEIVED.
17	8.3.17	14:10	400kV Bawana-Mundka Ckt-II	8.3.17	14:37	AT BAWANA CKT. TRIPPED WITHOUT INDICATION. AT MUNDKA CKT. DID NOT TRIPPED.
18	8.3.17	14:10	220kV MUNDKA-NAJAFGARH CKT	8.3.17	14:20	AT NAJAFGARH CKT. TRIPPED ON 186, 86, ABC. AT MUNDKA CKT. DID NOT TRIPPED.
19	8.3.17	14:10	400kV Mundka-Jhatikara Ckt-I	8.3.17	15:15	AT MUNDKA CKT. TRIPPED ON 86A&B, DT RECEIVED.
20	9.3.17	23:52	OKHLA 220/33kV 100MVA Tx-IV	10.3.17	00:10	33KV I/C-IV TRIPPED ON 51B, 86.
21	9.3.17	23:52	OKHLA 220/33kV 100MVA Tx-III	10.3.17	00:10	33KV I/C-III TRIPPED ON 51B, 86.
22	10.3.17	03:05	400kV Bawana-Mundka Ckt-I	10.3.17	06:41	AT BAWANA CKT. TRIPPED ON DIST PROT, RYB PHASE, OVER VOLTAGE, 186A&B. CKT. DID NOT TRIPPED AT MUNDKA.
23	10.3.17	16:45	DSIIDC Bawana 220/66kV 100MVA Tx-III	10.3.17	18:25	TR. TRIPPED ON 86. HIGH WINDING TEMPERATURE.
24	12.3.17	12:35	RIDGE VALLEY 220/66kV 160MVA Tx-II	12.3.17	17:40	TR. TRIPPED ON E/F.
25	12.3.17	16:50	MASJID MOTH 220/33kV 100MVA Tx-II	12.3.17	20:50	TR. TRIPPED ON MASTER TRIP.
26	12.3.17	16:50	PAPPANKALAN-I 220/66kV 100MVA Tx-IV	12.3.17	19:15	TR. TRIPPED WITHOUT INDICATION.
27	13.3.17	08:04	SUBZI MANDI 33/11kV, 16MVA Tx-I	13.3.17	08:34	TR. TRIPPED ON DIFFERENTIAL.
28	14.3.17	10:10	ROHINI 220/66kV 100MVA Tx-III	14.3.17	17:49	TR. TRIPPED ON 30CH.
29	17.3.17	16:50	RIDGE VALLEY 220/66kV 160MVA Tx-II	17.3.17	21:02	TR. TRIPPED ON GEN TRIP, BUCHOLZ.
30	17.3.17	16:50	220 KV TRAUMA CENTER-RIDGE VALLEY CKT-2	17.3.17	17:43	AT TRAUMA CENTER CKT. TRIPPED ON 86. AT RIDGE VALLEY CKT. DID NO TRIP.
31	17.3.17	16:50	220kV MAHARANIBAGH -TRAUMA CENTER CKT-II	17.3.17	17:43	AT TRAUMA CENTER CKT. TRIPPED ON 86. AT MAHARANI BAGH CKT. DID NO TRIP.
32	18.3.17	13:55	VASANT KUNJ 66/11kV, 20MVA Tx-II	18.3.17	16:40	TR. TRIPPED ON 86.
33	20.3.17	10:20	MEHRAULI 66kV MALVIYA NAGAR CKT-I	20.3.17	13:30	CKT. TRIPPED ON 86, SPS OPERATED.
34	20.3.17	10:20	MEHRAULI 66kV MALVIYA NAGAR CKT-II	20.3.17	13:30	CKT. TRIPPED ON 86, SPS OPERATED.
35	20.3.17	10:20	MEHRAULI 66kV CDOT CKT-II	20.3.17	13:30	CKT. TRIPPED ON 86, SPS OPERATED.
36	20.3.17	10:20	MEHRAULI 66kV CDOT CKT-I	20.3.17	13:30	CKT. TRIPPED ON 86, SPS OPERATED.
37	21.3.17	00:07	WAZIRPUR 220/33kV 100MVA Tx-II	21.3.17	01:23	TR. TRIPPED ON 86.
38	21.3.17	10:22	220kV GOPALPUR- MANDOLACKT-I	21.3.17	10:38	AT GOPALPUR CKT. TRIPPED ON DIST PROT, ZONE-I, DIST 9.91KM.
39	22.3.17	10:42	220kV WAZIRABAD - KASHMERE GATE CKT-II	22.3.17	12:25	AT WAZIRABAD CKT. TRIPPED ON DIST PROT, ZONE-3, DIST 1.801KM.
40	22.3.17	13:10	PAPPANKALAN-I 220/66kV 160MVA Tx-I	22.3.17	14:43	TR. TRIPPED ON O/C, 86 ALONGWITH I/C-V TRIPPED ON INTER TRIPPING.
41	22.3.17	14:34	GAZIPUR 66/11kV, 20MVA Tx-II	22.3.17	16:05	TR. TRIPPED ON DIFFERENTIAL PROT ALONGWITH I/C TRIPPED ON INTER TRIP.
42	22.3.17	22:30	220kV MAHARANI BAGH - LODHI ROAD CKT-II	24.3.17	13:01	AT MAHARANI BAGH CKT. TRIPPED ON DIST PROT, ZONE-II, III, DIST 4.8KM.
43	22.3.17	22:30	220/66kV 100MVA TR. -II AT LODHI ROAD	Contd.		TR. TRIPPED ON DIFFERENTIAL & BUCHLOZ RELAY AND GOT DAMAGED. INTERNAL FAULT IN R PHASE WINDING.

SL NO	OCCURRENCE OF BREAK-DOWN		DETAILS OF THE BREAKDOWN	TIME OF RESTORATION		REMARKS
	DATE	TIME		DATE	TIME	
44	23.3.17	13:00	220kV MEHRAULI - BTPS CKT. - II	23.3.17	15:07	AT MEHRAULI CKT. TRIPPED ON DIST PROT, ZONE-I, DIST 10.68KM AT BTPS CKT WAS IN OFF POSITION.
45	23.3.17	14:09	220kV MUNDKA-NAJAFGARH CKT	23.3.17	16:07	AT MUNDKA CKT. TRIPPED ON 86LO, RYB PHASE.
46	23.3.17	14:51	220KV WAZIRABAD - MANDOLA CKT-III	23.3.17	15:05	AT MANDOLA CKT. TRIPPED WITHOUT INDICATION. AT WAZIRABAD CKT. CKT. DID NOT TRIPPED.
47	23.3.17	16:10	220kV MUNDKA-KANJHAWALA CKT	23.3.17	16:15	AT MUNDKA CKT. TRIPPED WITHOUT INDICATION. AT KHANJAWALA CKT. DID NOT TRIP.
48	26.3.17	09:31	SUBZI MANDI 220/33kV 100MVA Tx-I	26.3.17	09:38	TR. TRIPPED WHILE NORMALIZING THE 220KV GOPALPUR CKT. -I
49	26.3.17	09:31	SUBZI MANDI 220/33kV 100MVA Tx-II	26.3.17	10:20	TR. TRIPPED WHILE NORMALIZING THE 220KV GOPALPUR CKT. -I
50	26.3.17	15:50	220kV SHALIMAR BAGH - DMRC CKT	26.3.17	16:11	AT SHALIMAR BAGH CKT. TRIPPED ON PNC.
51	26.3.17	22:25	PARKSTREET 220/33kV 100MVA Tx-I	26.3.17	22:48	TR. TRIPPED ON BUCHOLZ.
52	27.3.17	07:46	PARKSTREET 220/33kV 100MVA Tx-I	27.3.17	08:37	TR. TRIPPED ON 86, 186.
53	27.3.17	08:25	PARKSTREET 66/33kV, 30MVA Tx-I	27.3.17	08:37	TR. TRIPPED ON 86.
54	27.3.17	08:25	PARKSTREET 66/33kV, 30MVA Tx-II	27.3.17	08:37	TR. TRIPPED ON 86.
55	27.3.17	13:54	220kV GAZIPUR - BTPS CKT	27.3.17	18:10	AT BTPS CKT. TRIPPED ON DIST PROT, ZONE-I
56	28.3.17	14:00	220kV MAHARANI BAGH - SARITA VIHAR CKT	28.3.17	15:20	AT MAHARANI BAGH CKT. TRIPPED ON DIST PROT, ZONE-II, DIST 8.8KM. AT SARITA VIHAR CKT. TRIPPED ON DIST PROT. ZONE-I, DIST 4.79KM.
57	28.3.17	16:23	220kV GAZIPUR - BTPS CKT	28.3.17	18:05	AT BTPS CKT TRIPPED ON DIST PROT, ZONE-I, R PHASE. AT GAZIPUR SUPPLY FAILED.
58	28.3.17	17:11	220kV BAMNAULI-PAPPANKALAN-I CKT-II	28.3.17	17:16	AT PAPPANKALAN-I CKT. TRIPPED ON 86ABC.
59	28.3.17	18:30	MEHRAULI 66/11kV, 20MVA Tx-I	28.3.17	19:15	TR. TRIPPED ON O/C, R PHASE, 86.
60	30.3.17	04:02	NAJAFGARH 220/66kV 100MVA Tx-II	30.3.17	04:55	66KV I/C-2 OF TR. TRIPPED ON E/F.
61	30.3.17	04:02	NAJAFGARH 220/66kV 100MVA Tx-IV	30.3.17	04:55	66KV I/C-4 OF TR. TRIPPED WITHOUT INDICATION.
62	30.3.17	14:25	PAPPANKALAN-I 220/66kV 100MVA Tx-IV	30.3.17	15:06	I/C-IV TRIPPED ON E/F, 86.
63	30.3.17	14:25	PAPPANKALAN-I 220/66kV 100MVA Tx-II	30.3.17	15:06	I/C-II TRIPPED ON E/F, 86.
64	30.3.17	14:25	PAPPANKALAN-I 220/66kV 160MVA Tx-I	30.3.17	15:06	I/C-V TRIPPED ON O/C, 86.
65	30.3.17	19:16	220kV BAMNAULI-NARAINA CKT-I	30.3.17	19:33	AT NARAINA CKT. TRIPPED ON DIST PROT, E/F, R&Y PHASE. AT BAMNAULI CKT. DID NOT TRIP.
66	31.3.17	23:20	PARKSTREET 220/66kV 100MVA Tx-I	31.3.17	23:42	66KV I/C -1 TRIPPED ON E/F, 51N.

20 DETAILS OF UNDER FREQUENCY RELAY OPERATIONS IN DELHI POWER SYSTEM DURING THE MONTH OF MARCH 2017

DATE	S. N.	TIME		Name of Grid	NAME OF AFFECTED FEEDERS	MODE	LOAD RELIEF IN MW
		OUT	IN				
25.03.17	1	14.15	14.16	SHALIMARBAGH	ASHOK VIHAR, SMB KHOSLA	Malfunctioning	6
	2	22.54	23.02	KASHMIRI GATE	FOUNTAIN, LAHORI GATE	Malfunctioning	4